

**SECTION VI -
SUPPLEMENTAL DATA**

**DOMESTIC CRIMES
CRIMES AGAINST CHILDREN
CRIMES AGAINST SCHOOL PERSONNEL
HATE CRIMES
DATA**

In April 1996, the Illinois State Police began the collection of additional crime information. This data includes statistics pertaining to offenses mandated by state statutes and offenses concerning children. The following data in this section reflects crimes having occurred from January 1, 1999 through December 31, 1999. Due to limitations on agencies' reporting systems, all agencies are not included in the totals presented in the following charts. In some cases, the percentages may not equal 100 due to rounding.

Domestic Crimes

The following data in this category reflects crimes which are domestic related. Reporting of domestic violence is mandated by Chapter 20 of the Illinois Compiled Statutes, 2630/5.1. Domestic related is defined as family or household members which include spouses, former spouses, parents, children, stepchildren and other persons related by blood or marriage, persons who share or formerly shared a common dwelling and persons who have or allegedly have a child in common. In the case of a high-risk adult with disabilities, family or household member includes any person who has the responsibility for a high-risk adult as a result of a family relationship or who has assumed responsibility for all or a portion of the care of a high-risk adult with disabilities voluntarily, or by express or implied contract, or court order.

Crimes Against Children

Although reporting in this category is not mandated by state statutes, information is collected to research and evaluate the problems of offenses against children. Contributing agencies are not required to report this data to the Uniform Crime Reporting Program. This information is optional and is submitted voluntarily by the reporting agencies. All crimes committed against children 16 years and younger are included in this category.

Crimes Against School Personnel

The reporting of attacks on school personnel is mandated by Chapter 105 of the Illinois Compiled Statutes, 5/10-21.7. The Uniform Crime Reporting Program collects information relating to all crimes committed against teachers, teacher personnel, administrative personnel or educational support personnel. These persons can include teachers' aides, bus drivers or janitors etc. who are employed by the school.

Hate Crimes

The reporting of hate crime information is mandated by Chapter 20 of the Illinois Compiled Statutes, 2605/55a. A person commits hate crime when, by reason of the actual or perceived race, color, creed, religion, ancestry, gender, sexual orientation, physical or mental disability, or national origin of another individual or group of individuals, he commits assault, battery, aggravated assault, misdemeanor theft, criminal trespass to residence, misdemeanor criminal damage to property, criminal trespass to vehicle, criminal trespass to real property, mob action or disorderly conduct.

Domestic Crimes Annual 1999/1998 State Totals

Type of Offenses

Crime by Category	1999 # of Offenses	1999 % of Total	1998 # of Offenses	1998 % of Total
Murder	54	0.0%	64	0.0%
Criminal Sexual Assault	1,110	0.9%	1,128	0.9%
Robbery	773	0.6%	949	0.7%
Aggravated Assault/Battery	9,354	7.4%	10,057	7.6%
Simple Assault/Battery	84,065	66.6%	87,338	66.4%
Burglary	518	0.4%	701	0.5%
Theft/Burglary to Vehicle	3,150	2.5%	3,672	2.8%
Motor Vehicle Theft	136	0.1%	102	0.1%
Arson	78	0.1%	88	0.1%
Criminal Damage/Trespass	5,978	4.7%	6,159	4.7%
Sex Offenses	1,187	0.9%	1,238	0.9%
Offenses Involving Children	3,195	2.5%	3,268	2.5%
Disorderly Conduct	5,089	4.0%	5,389	4.1%
Intimidation	132	0.1%	145	0.1%
Kidnapping	1,299	1.0%	1,301	1.0%
Deadly Weapons	29	0.0%	47	0.0%
Violation of Orders of Protection	4,772	3.8%	4,511	3.4%
All Other Offenses	5,273	4.2%	5,336	4.1%
TOTAL	126,192	100.0%	131,493	100.0%

Domestic Crimes by Relationship

Family Related

Relationship Type	Group Percent	Relationship	Percent of Total
Marital	48.2%	Spouse	41.9%
		Ex-Spouse	5.3%
		Common-law Spouse	1.0%
Parental/ Child	29.1%	Parent	12.8%
		Step-Parent	0.6%
		Grandparent	0.3%
		Child	13.1%
		Step-Child	1.3%
		Grandchild	0.3%
		Child of Boyfriend/Girlfriend	0.7%
Other Family	22.7%	Sibling	12.2%
		Step-Sibling	0.2%
		In-law	3.2%
		Other Family	7.1%

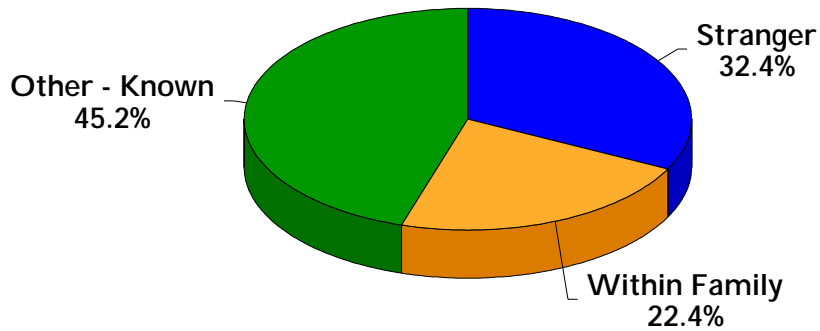
Other Domestic Related

Relationship	Percent of Total
Boyfriend/Girlfriend	80.5%
Same Sex Relationship	0.4%
Child in Common with Offender	1.8%
*Friend	11.7%
*Otherwise Known	5.6%

* includes roommates/personal care attendants, etc.

Crimes Against Children State Totals

1999 Relationship Type

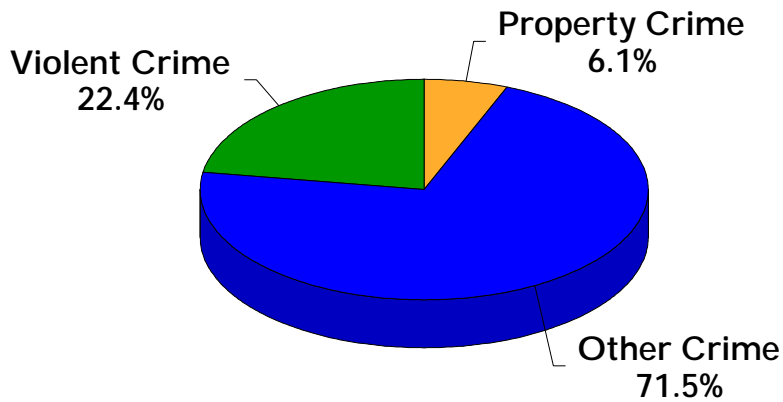


1999/1998 Comparison Victim Age

Age	1999		1998	
	# of Offenses	% of Total	# of Offenses	% of Total
Under 1	196	0.5%	218	0.6%
1	553	1.5%	548	1.4%
2	592	1.6%	582	1.5%
3	632	1.8%	626	1.6%
4	637	1.8%	683	1.8%
5	714	2.0%	747	1.9%
6	839	2.3%	811	2.1%
7	1,007	2.8%	1,042	2.7%
8	1,322	3.7%	1,213	3.1%
9	1,535	4.3%	1,616	4.2%
10	1,847	5.1%	1,870	4.8%
11	2,354	6.5%	2,335	6.1%
12	3,160	8.8%	3,198	8.3%
13	3,954	11.0%	4,273	11.1%
14	4,929	13.7%	5,350	13.9%
15	5,614	15.6%	6,272	16.3%
16	6,202	17.2%	7,199	18.7%
Total	36,087	100.0%	38,583	100.0%

Crimes Against Children State Totals

1999 Offense Type



1999/1998 Comparison Offense Type

Crime by Category	1999 # of Offenses	1999 % of Total	1998 # of Offenses	1998 % of Total
Murder	51	0.1%	79	0.2%
Criminal Sexual Assault	1,283	3.6%	1,305	3.4%
Robbery	2,235	6.2%	3,005	7.8%
Aggravated Assault/Battery	4,532	12.6%	5,025	13.0%
Simple Assault/Battery	18,071	50.1%	18,788	48.7%
Burglary	102	0.3%	96	0.2%
Theft/Burglary to Vehicle	2,051	5.7%	2,262	5.9%
Motor Vehicle Theft	14	0.0%	18	0.0%
Arson	18	0.0%	11	0.0%
Sex Offenses	1,915	5.3%	2,094	5.4%
Offenses Involving Children	3,296	9.1%	3,334	8.6%
Intimidation	92	0.3%	113	0.3%
Kidnapping	744	2.1%	687	1.8%
All Other Offenses	1,683	4.7%	1,766	4.6%
Total	36,087	100.0%	38,583	100.0%

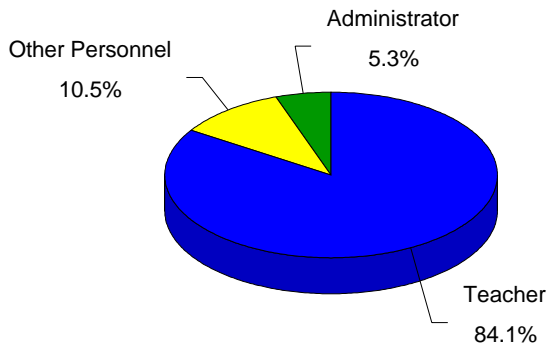
Crimes Against School Personnel 1999 State Totals

1999/1998 Comparison Type of Offenses

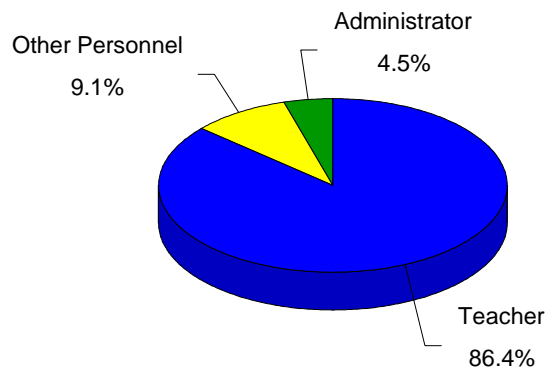
Crime by Category	1999 # of Offenses	1999 % of Total	1998 # of Offenses	1998 % of Total
Battery	942	54.7%	1,155	57.9%
Assault	653	37.9%	696	34.9%
Disorderly Conduct	61	3.5%	55	2.8%
Theft	25	1.5%	35	1.8%
Criminal Damage to Property	24	1.4%	31	1.6%
Robbery	4	0.2%	3	0.2%
Intimidation	1	0.1%	4	0.2%
Kidnapping	1	0.1%	1	0.1%
Deadly Weapons	8	0.5%	6	0.3%
Sex Offenses	1	0.1%	1	0.1%
Deceptive Practices	0	0.0%	1	0.1%
Burglary	0	0.0%	2	0.1%
Interference with Public Officers	0	0.0%	1	0.1%
All Other Offenses	1	0.1%	3	0.2%
Total	1,721	100.0%	1,994	100.0%

Victim Type

1999

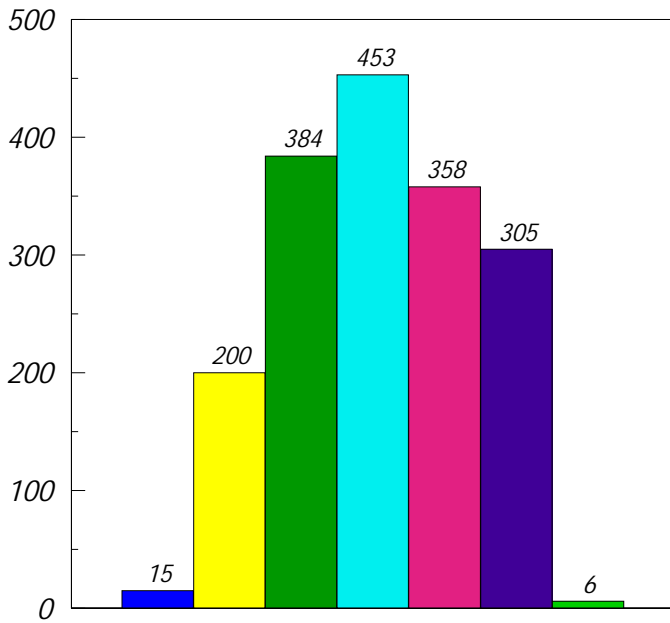


1998



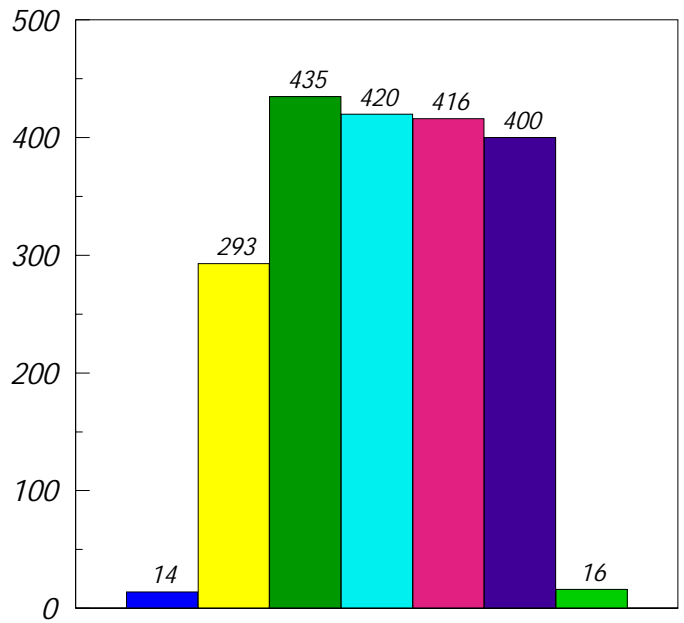
Crimes Against School Personnel State Totals by Day of Week Comparison

1999



■ Sunday ■ Wednesday ■ Friday
■ Monday ■ Thursday ■ Saturday
■ Tuesday

1998

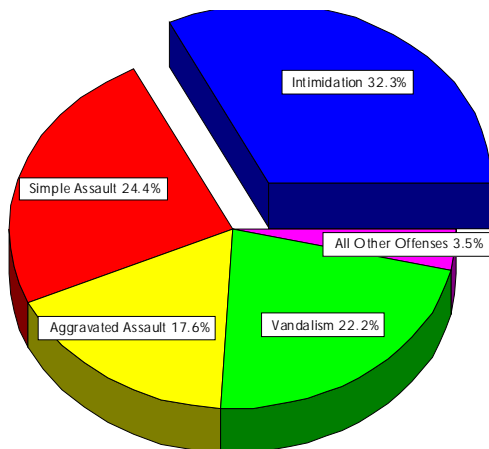


■ Sunday ■ Wednesday ■ Friday
■ Monday ■ Thursday ■ Saturday
■ Tuesday

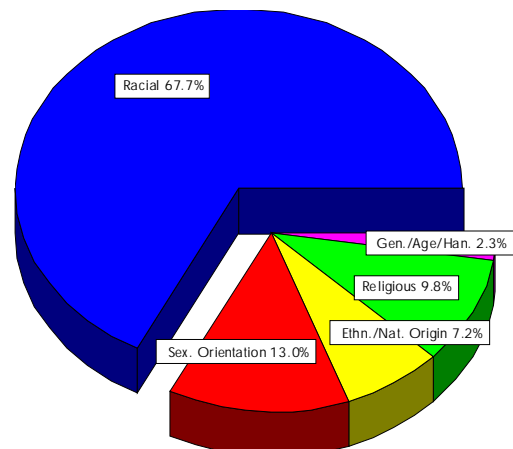
Hate Crimes 1999 State Totals

Bias Motivation				
Bias Nature	Group Percent	Bias Type	# of Offenses	% of Total
Racial	67.7%	Anti-Black	150	43.2%
		Anti-White	54	15.6%
		Anti-Asian/Pacific Islander	25	7.2%
		Anti-Amer. Indian/Alaskan Native	1	0.3%
		Anti-Multi-Racial Group	5	1.4%
Sexual Orientation	13.0%	Anti-Male Homosexual	38	11.0%
		Anti-Homosexual	7	2.0%
Ethnicity/ National Origin	7.2%	Anti-Hispanic	15	4.3%
		Anti-Arab	1	0.3%
		Anti-Other Etn./National Origin	9	2.6%
Religious	9.8%	Anti-Catholic	1	0.3%
		Anti-Jewish	31	8.9%
		Anti-Multi-Religion	2	0.6%
Gender/ Age/ Handicap	2.3%	Anti-Elderly	2	0.6%
		Anti-Male	1	0.3%
		Anti-Physically Handicapped	1	0.3%
		Anti-Mentally Handicapped	4	1.1%
Total	100%	Total	347	100.0%

Hate Crime Offenses



Bias Motivation

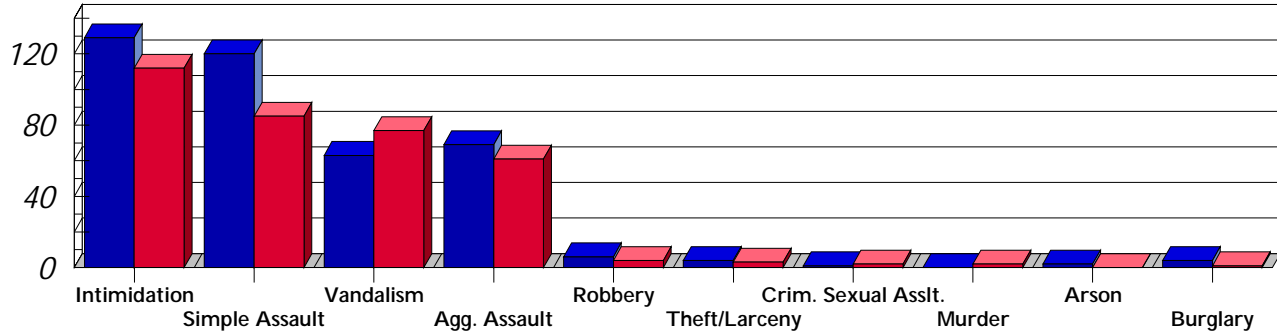


Hate/Bias Crime 1999 State Totals

Motivation	Murder	Aggravated Assault	Criminal Sexual Assault	Simple Assault	Robbery	Burglary	Theft/Larceny	Arson	Intimidation	Destruction/Damage/Vandalism	TOTAL
Anti-Amer. Indian/Alaskan Native	–	–	–	–	–	–	–	–	–	1	1
Anti-Arab	–	–	–	1	–	–	–	–	–	–	1
Anti-Asian/Pacific Islander	1	9	–	6	–	–	–	–	4	5	25
Anti-Black	1	21	–	30	1	1	–	–	61	35	150
Anti-Catholic	–	–	–	–	–	–	–	–	–	1	1
Anti-Elderly	–	–	–	–	–	–	2	–	–	–	2
Anti-Hispanic	–	5	–	3	–	–	–	–	4	3	15
Anit-Homosexual (Gay & Lesbian)	–	3	–	–	–	–	–	–	2	2	7
Anti-Jewish	–	1	–	4	–	–	–	–	11	15	31
Anti-Male	–	1	–	–	–	–	–	–	–	–	1
Anti-Male Homosexual	–	7	–	16	–	–	–	–	12	3	38
Anti-Mentally Handicapped	–	–	1	1	–	–	–	–	2	–	4
Anti-Multi-Racial Group	–	–	–	1	–	–	–	–	2	2	5
Anti-Multi-Religious Group	–	–	–	–	–	–	–	–	–	2	2
Anti-Other Ethnicity/National Origin	–	3	–	2	–	–	–	–	2	2	9
Anti-Physically Handicapped	–	–	–	–	–	–	1	–	–	–	1
Anti-White	–	11	1	21	3	–	–	–	12	6	54
Total	2	61	2	85	4	1	3	–	112	77	347

Hate Crime Comparison 1999/1998

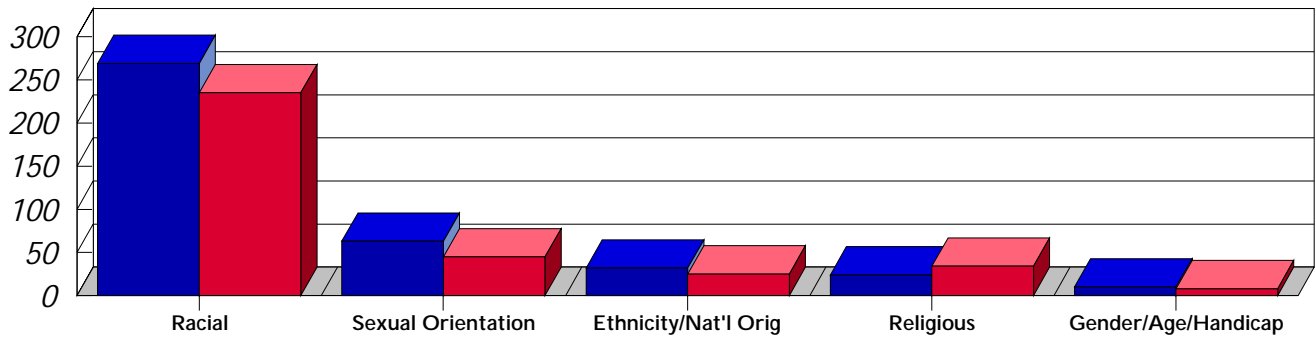
Offenses



■ 1998 ■ 1999

	Intimidation	Simple Assault	Vandalism	Agg. Assault	Robbery	Theft/Larceny	Crim. Sexual Asslt.	Murder	Arson	Burglary
■ 1998	129	120	63	69	6	4	1	0	2	4
■ 1999	112	85	77	61	4	3	2	2	0	1

Bias



■ 1998 ■ 1999

	Racial	Sexual Orientation	Ethnicity/Nat'l Origin	Religious	Gender/Age/Handicap
■ 1998	269	63	32	24	10
■ 1999	235	45	25	34	8

Supplemental Data
Total Offenses Reported
1999/1998 County Totals

County	Crimes Against School Personnel			Crimes Against Children			Domestic Crimes			Hate Crimes		
	1999	1998	Percent Change	1999	1998	Percent Change	1999	1998	Percent Change	1999	1998	Percent Change
ADAMS	8	4	100.0	317	291	8.9	955	997	-4.2	2	1	100.0
ALEXANDER	0	0	0.0	4	9	-55.6	49	51	-3.9	0	0	0.0
BOND	0	0	0.0	2	0	0.0	7	2	250.0	0	0	0.0
BOONE	2	1	100.0	103	168	-38.7	161	269	-40.1	0	1	-100.0
BROWN	0	0	0.0	0	0	0.0	0	0	0.0	0	0	0.0
BUREAU	1	0	0.0	79	65	21.5	110	105	4.8	1	0	0.0
CALHOUN	0	0	0.0	0	0	0.0	0	0	0.0	0	0	0.0
CARROLL	0	0	0.0	29	49	-40.8	93	111	-16.2	0	1	-100.0
CASS	0	0	0.0	3	2	50.0	18	16	12.5	0	0	0.0
CHAMPAIGN	40	42	-4.8	718	769	-6.6	3413	3244	5.2	50	32	56.3
CHRISTIAN	0	0	0.0	8	15	-46.7	107	130	-17.7	0	0	0.0
CLARK	0	0	0.0	3	0	0.0	24	32	-25.0	0	0	0.0
CLAY	0	0	0.0	2	4	-50.0	22	37	-40.5	0	0	0.0
CLINTON	0	0	0.0	60	68	-11.8	103	118	-12.7	0	0	0.0
COLES	0	0	0.0	23	19	21.1	230	271	-15.1	0	0	0.0
COOK	1144	1403	-18.6	24493	26156	-6.9	84929	88235	-3.5	142	156	-9.0
CRAWFORD	2	0	0.0	66	33	100.0	187	99	88.9	0	1	-100.0
CUMBERLAND	0	0	0.0	3	3	0.0	24	16	50.0	0	0	0.0
DE KALB	1	2	-50.0	176	207	-15.0	591	543	8.8	1	6	-83.3
DE WITT	0	0	0.0	0	0	0.0	0	0	0.0	0	0	0.0
DOUGLAS	1	1	0.0	20	14	42.9	82	70	17.1	3	1	200.0
DU PAGE	44	33	33.3	837	789	6.1	2968	3018	-1.7	12	18	-33.3
EDGAR	1	0	0.0	55	43	27.9	176	122	44.3	0	0	0.0
EDWARDS	0	0	0.0	0	0	0.0	0	0	0.0	0	0	0.0
EFFINGHAM	5	6	-16.7	123	126	-2.4	166	221	-24.9	0	2	-100.0
FAYETTE	0	0	0.0	42	55	-23.6	139	153	-9.2	0	2	-100.0
FORD	1	0	0.0	17	10	70.0	33	36	-8.3	0	0	0.0
FRANKLIN	0	0	0.0	5	3	66.7	136	89	52.8	0	0	0.0
FULTON	12	5	140.0	24	24	0.0	101	109	-7.3	0	0	0.0
GALLATIN	0	0	0.0	0	0	0.0	4	3	33.3	0	0	0.0
GREENE	0	2	-100.0	13	18	-27.8	26	29	-10.3	0	3	-100.0
GRUNDY	0	0	0.0	41	64	-35.9	171	197	-13.2	0	0	0.0
HAMILTON	0	0	0.0	0	0	0.0	0	0	0.0	0	0	0.0
HANCOCK	0	2	-100.0	4	6	-33.3	25	24	4.2	0	0	0.0
HARDIN	0	0	0.0	0	0	0.0	0	0	0.0	0	0	0.0
HENDERSON	0	0	0.0	0	7	-100.0	0	17	-100.0	0	0	0.0
HENRY	0	1	-100.0	62	38	63.2	146	133	9.8	0	0	0.0
IROQUOIS	0	0	0.0	2	4	-50.0	20	26	-23.1	0	0	0.0
JACKSON	0	0	0.0	15	16	-6.3	176	180	-2.2	7	3	133.3
JASPER	0	0	0.0	0	10	-100.0	2	26	-92.3	0	1	-100.0
JEFFERSON	0	0	0.0	257	228	12.7	601	548	9.7	2	21	-90.5
JERSEY	1	0	0.0	16	7	128.6	94	39	141.0	0	0	0.0
JO DAVIESS	0	0	0.0	24	11	118.2	52	52	0.0	1	0	0.0
JOHNSON	0	0	0.0	0	0	0.0	0	0	0.0	0	0	0.0
KANE	12	15	-20.0	298	312	-4.5	1523	1534	-0.7	4	4	0.0
KANKAKEE	18	15	20.0	285	346	-17.6	893	888	0.6	0	0	0.0
KENDALL	0	0	0.0	102	88	15.9	203	212	-4.2	0	0	0.0
KNOX	8	2	300.0	29	13	123.1	288	244	18.0	0	0	0.0
LA SALLE	13	17	-23.5	73	102	-28.4	479	724	-33.8	0	1	-100.0
LAKE	32	19	68.4	436	531	-17.9	2772	3027	-8.4	10	8	25.0
LAWRENCE	0	0	0.0	1	2	-50.0	89	68	30.9	0	0	0.0

Supplemental Data
Total Offenses Reported
1999/1998 County Totals, Cont'd

County	Crimes Against School Personnel			Crimes Against Children			Domestic Crimes			Hate Crimes		
	1999	1998	Percent Change	1999	1998	Percent Change	1999	1998	Percent Change	1999	1998	Percent Change
LEE	3	17	-82.4	3	8	-62.5	111	111	0.0	0	0	0.0
LIVINGSTON	1	0	0.0	150	116	29.3	290	266	9.0	3	3	0.0
LOGAN	0	0	0.0	175	188	-6.9	350	377	-7.2	0	0	0.0
MCDONOUGH	0	0	0.0	5	2	150.0	99	24	312.5	3	3	0.0
MCHENRY	4	0	0.0	72	85	-15.3	422	576	-26.7	1	2	-50.0
MCLEAN	2	1	100.0	283	320	-11.6	596	532	12.0	1	3	-66.7
MACON	14	1	1300.0	511	546	-6.4	2353	3318	-29.1	2	1	100.0
MACOUPIN	1	1	0.0	70	56	25.0	205	231	-11.3	0	0	0.0
MADISON	41	53	-22.6	1196	1151	3.9	3228	3293	-2.0	8	9	-11.1
MARION	0	0	0.0	34	52	-34.6	89	156	-42.9	0	0	0.0
MARSHALL	0	0	0.0	31	17	82.4	59	63	-6.3	0	0	0.0
MASON	0	0	0.0	35	28	25.0	76	74	2.7	0	0	0.0
MASSAC	3	1	200.0	8	20	-60.0	120	125	-4.0	0	0	0.0
MENARD	0	0	0.0	5	5	0.0	36	37	-2.7	0	0	0.0
MERCER	0	0	0.0	3	3	0.0	51	31	64.5	0	0	0.0
MONROE	0	0	0.0	4	9	-55.6	44	62	-29.0	0	2	-100.0
MONTGOMERY	0	0	0.0	0	3	-100.0	18	42	-57.1	0	0	0.0
MORGAN	11	13	-15.4	46	77	-40.3	252	218	15.6	3	0	0.0
MOULTRIE	0	0	0.0	9	29	-69.0	33	32	3.1	0	0	0.0
OGLE	9	4	125.0	84	99	-15.2	244	298	-18.1	0	1	-100.0
PEORIA	135	174	-22.4	1665	1541	8.0	3688	3585	2.9	46	89	-48.3
PERRY	2	2	0.0	1	8	-87.5	24	31	-22.6	0	0	0.0
PIATT	0	1	-100.0	26	27	-3.7	64	75	-14.7	0	0	0.0
PIKE	0	0	0.0	1	0	0.0	13	0	0.0	0	0	0.0
POPE	1	1	0.0	1	2	-50.0	20	9	122.2	0	0	0.0
PULASKI	0	2	-100.0	5	5	0.0	19	19	0.0	0	0	0.0
PUTNAM	0	0	0.0	0	0	0.0	0	3	-100.0	0	0	0.0
RANDOLPH	0	0	0.0	9	10	-10.0	62	51	21.6	0	0	0.0
RICHLAND	0	0	0.0	7	53	-86.8	22	180	-87.8	0	0	0.0
ROCK ISLAND	24	14	71.4	343	327	4.9	1544	1387	11.3	3	1	200.0
ST. CLAIR	10	19	-47.4	547	566	-3.4	1262	1218	3.6	3	0	0.0
SALINE	0	0	0.0	67	26	157.7	238	153	55.6	4	0	0.0
SANGAMON	71	47	51.1	350	417	-16.1	1813	1835	-1.2	20	2	900.0
SCHUYLER	0	0	0.0	2	0	0.0	9	3	200.0	0	0	0.0
SCOTT	0	0	0.0	1	0	0.0	1	0	0.0	0	0	0.0
SHELBY	0	0	0.0	3	9	-66.7	28	61	-54.1	0	0	0.0
STARK	1	1	0.0	2	14	-85.7	18	25	-28.0	0	0	0.0
STEPHENSON	9	7	28.6	97	97	0.0	979	861	13.7	2	1	100.0
TAZEWELL	5	14	-64.3	240	498	-51.8	1066	1397	-23.7	3	7	-57.1
UNION	0	0	0.0	1	6	-83.3	19	26	-26.9	0	0	0.0
VERMILION	7	9	-22.2	248	318	-22.0	713	853	-16.4	1	5	-80.0
WABASH	0	0	0.0	49	35	40.0	102	85	20.0	0	0	0.0
WARREN	1	12	-91.7	24	30	-20.0	148	155	-4.5	0	0	0.0
WASHINGTON	1	5	-80.0	0	5	-100.0	7	11	-36.4	0	0	0.0
WAYNE	0	0	0.0	24	16	50.0	53	61	-13.1	0	1	-100.0
WHITE	3	7	-57.1	24	43	-44.2	55	43	27.9	0	1	-100.0
WHITESIDE	0	1	-100.0	25	48	-47.9	340	351	-3.4	1	0	0.0
WILL	10	8	25.0	503	585	-14.0	2049	2232	-8.2	5	5	0.0
WILLIAMSON	6	3	100.0	111	111	0.0	522	432	20.8	3	0	0.0
WINNEBAGO	0	6	-100.0	108	236	-54.2	159	331	-52.0	0	0	0.0
WOODFORD	0	0	0.0	9	11	-18.2	91	89	2.2	0	0	0.0
STATE TOTAL	1721	1994	-13.7	36087	38583	-6.5	126192	131493	-4.0	347	398	-12.8