

SECTION I - CRIME TRENDS

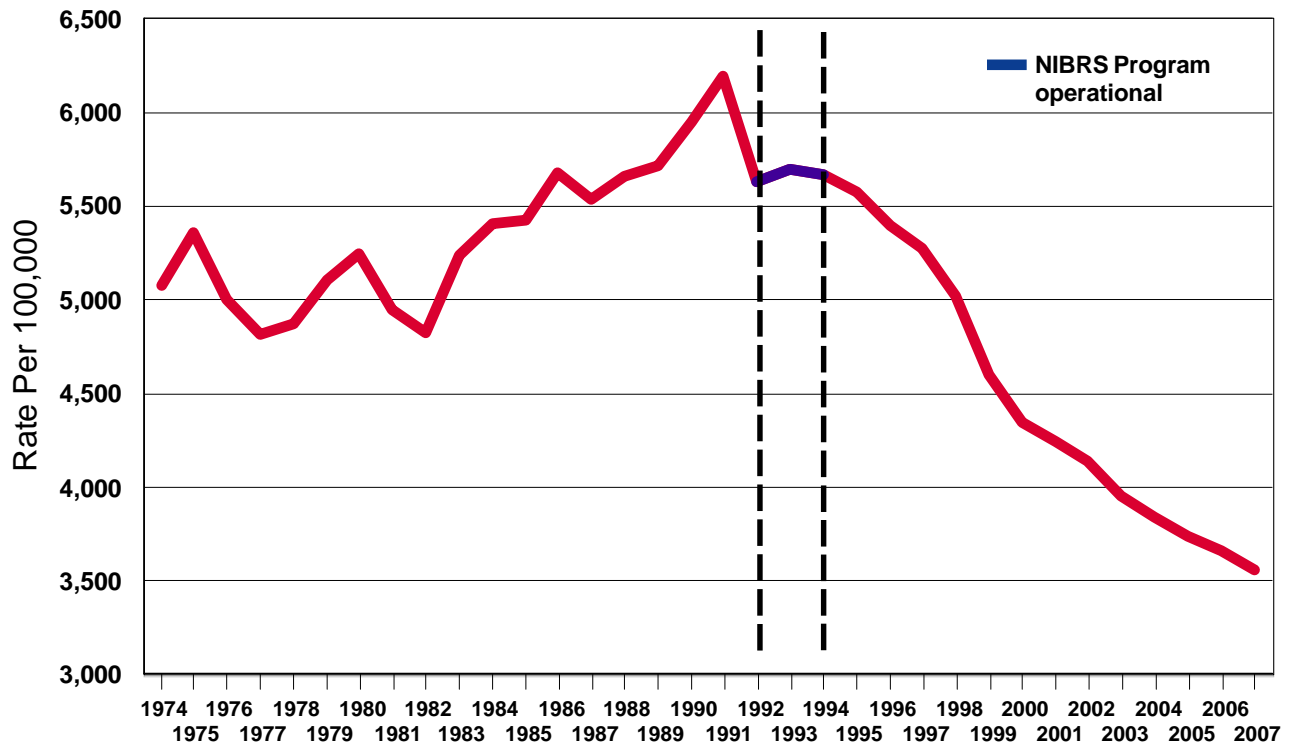
Crime Trends - A Historical Perspective

Historical information is intended to provide a comprehensive perspective of crime trends. The graph below illustrates the general trend of crimes reported in Illinois from 1974 to 2007. The Crime Index is composed of selected offenses used to gauge fluctuations in the overall volume and rate of crime reported to law enforcement. Offenses selected are violent crimes against persons including murder, criminal sexual assault, robbery, and aggravated assault/battery (including attempted murder and ritual mutilation); and crimes against property including burglary, theft (including burglary from a motor vehicle), motor vehicle theft, and arson.

Crime trends may be analyzed using two separate methods: crime volume and crime rates. Crime volume is merely the aggregate total of the Crime Index. By comparing the crime volume from year to year, trends in the number and types of crimes reported to police can be studied. Crime rates are compiled to compensate for the changes in the size of population. Crime rates are generally expressed as the total number of index crimes per 100,000 inhabitants.

The crime rate for the state of Illinois is shown for each year from 1974 through 2007. The term “rate” refers to the number of crimes per 100,000 inhabitants. The crime rate is calculated by dividing the number of crimes reported to police by the jurisdictional population, and multiplying that number by 100,000.

Illinois Crime Index Offense Rate 1974-2007



Considerations for interpretation:

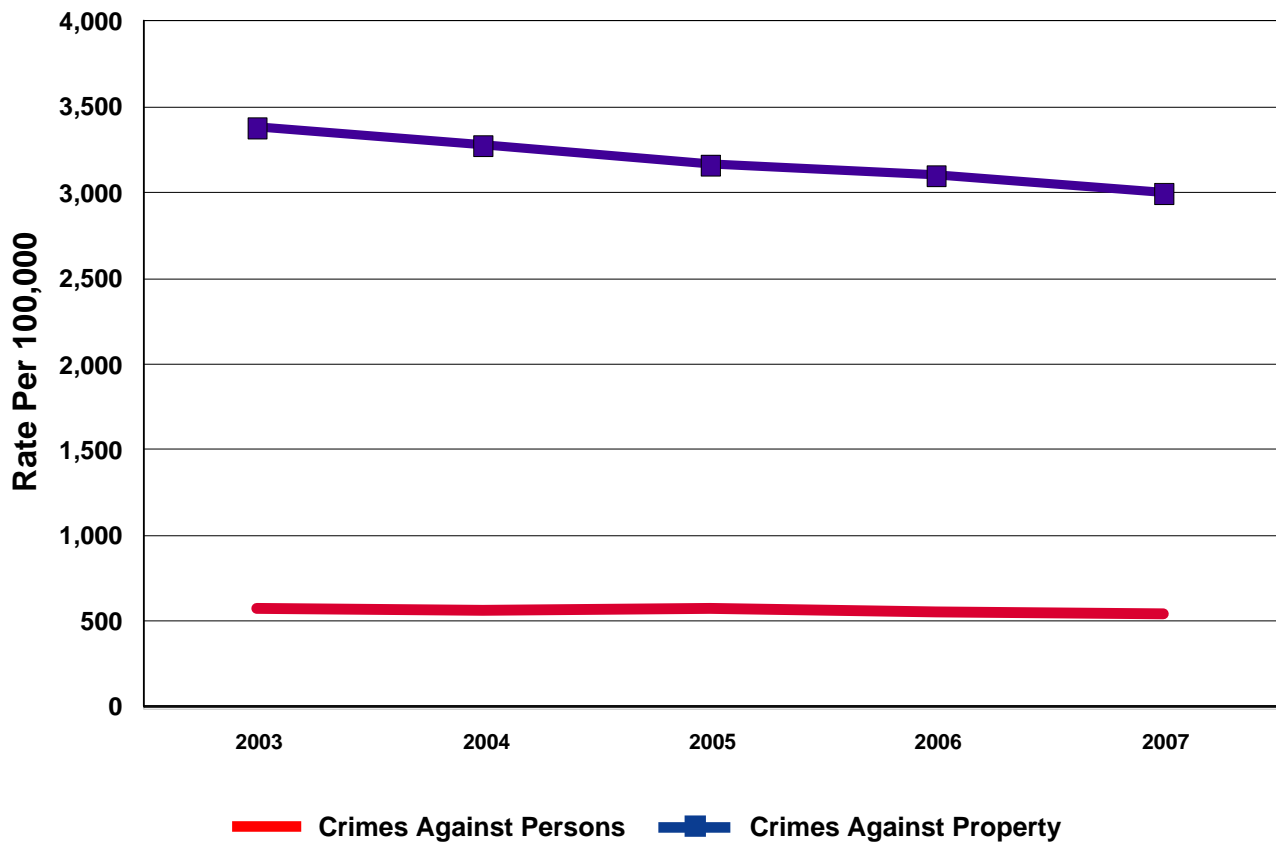
On January 1, 1992, the Revised Illinois Uniform Crime Reporting Program, operating under the Federal Bureau of Investigation's National Incident Based Reporting System (NIBRS) criteria, became operational. This new system was used to collect data from 1992 through 1993. In 1994 the Illinois State Police implemented a new reporting procedure. Data was captured and provided to the Illinois State Police on a Monthly Crime Index Form ISP 2-423 (2/07). Crime index offenses, crime index offense arrests, and drug crime arrests were required to be reported by local law enforcement agencies. This procedure is still in use to date; however, the change in reporting procedures in the early 1990s may have contributed to the decrease in Index offense rates from 1991-1993.

Effective July 1, 1984, sex crimes committed in Illinois were governed by a new statute entitled "Illinois Criminal Sexual Assault Act" (Chapter 720 ILCS 5/12-13,14). This statute repealed eight existing laws in Illinois including rape. On July 1, 1984, law enforcement agencies began reporting the new sex offenses to the I-UCR Program. The criminal sexual assault category reflects offenses reported as rape from 1972 through June 30, 1984. After July 1, 1984, offenses were reported as aggravated criminal sexual assault and criminal sexual assault.

Crime Trends - A Historical Perspective

Violent crimes against persons offenses include murder, criminal sexual assault, robbery, and aggravated assault/battery (including attempted murder and ritual mutilation). Violent crimes against persons accounted for 15.4 percent of the crime index total in 2007. Crimes against property offenses include burglary, theft (including burglary from a motor vehicle), motor vehicle theft, and arson. Crimes against property accounted for 84.6 percent of the crime index total in 2007.

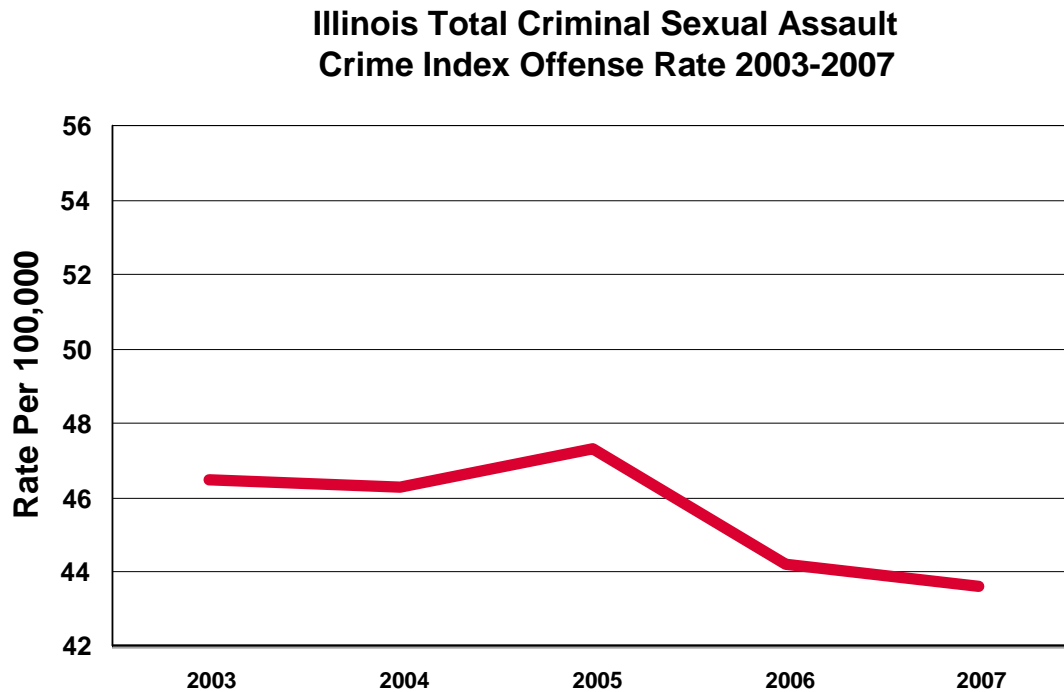
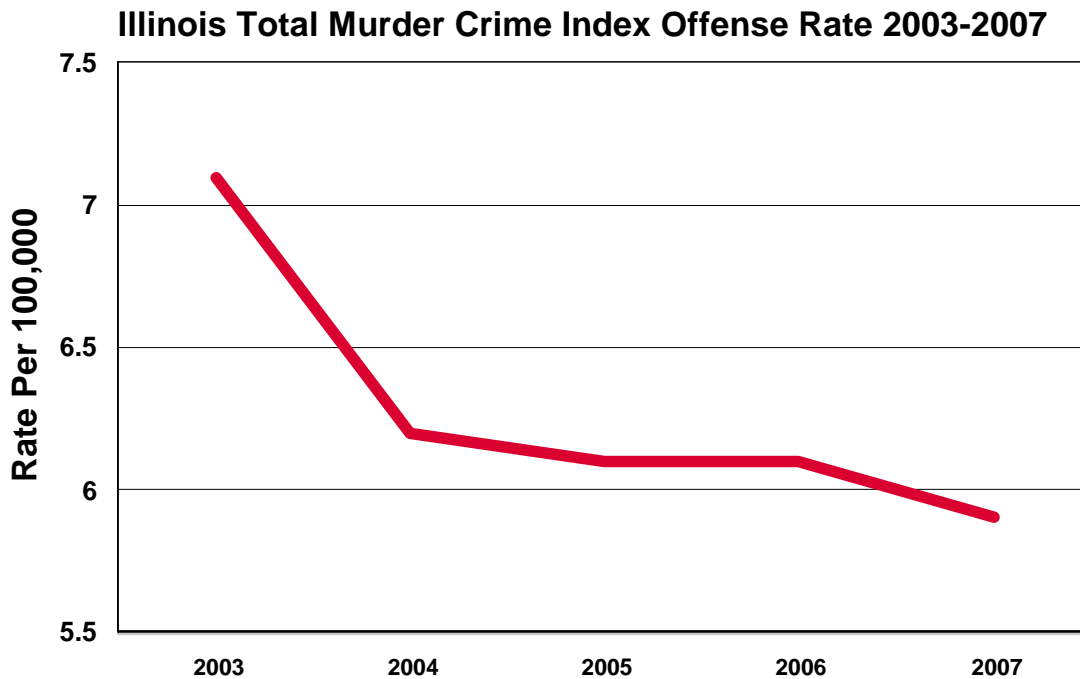
Illinois Crimes Against Persons & Property Index Offense Rate 2003-2007



Note: See page 18 for the actual crime index offense rates and total number of offenses reported in each category for 2003-2007.

Crime Trends - A Historical Perspective

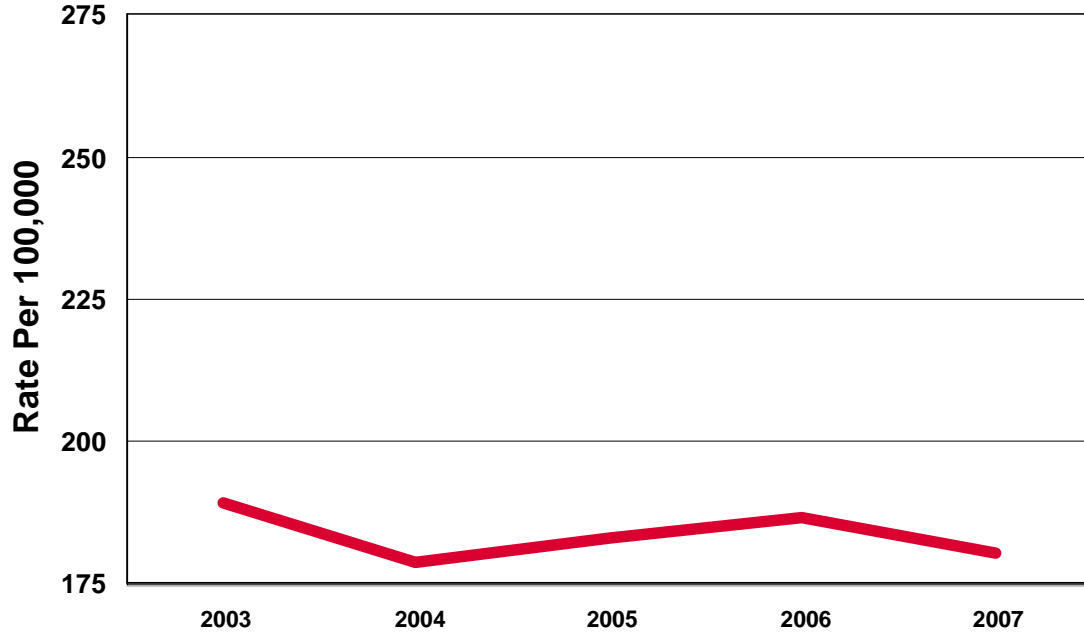
All violent crimes against persons crime index offense category rates decreased in 2007. Murder and criminal sexual assault remain the smallest percentage of the overall violent crimes against persons crime index offense total.



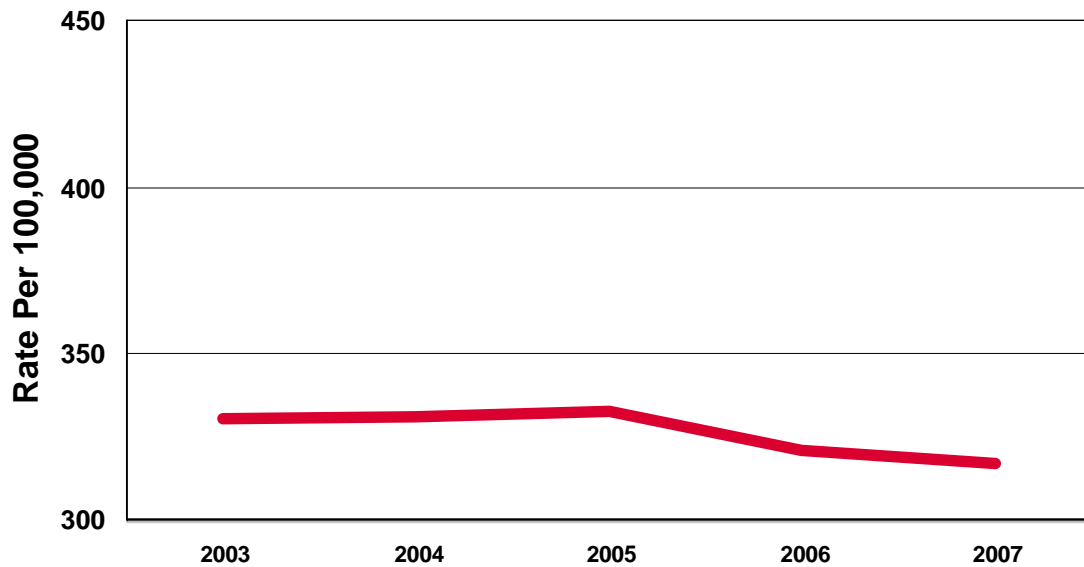
Note: See page 18 for the actual crime index offense rates and total number of offenses reported in each category for 2003-2007.

Crime Trends - A Historical Perspective

Illinois Total Robbery Crime Index Offense Rate 2003-2007



Illinois Total Aggravated Assault/Battery Crime Index Offense Rate 2003-2007 (Including Attempted Murder & Ritual Mutilation)

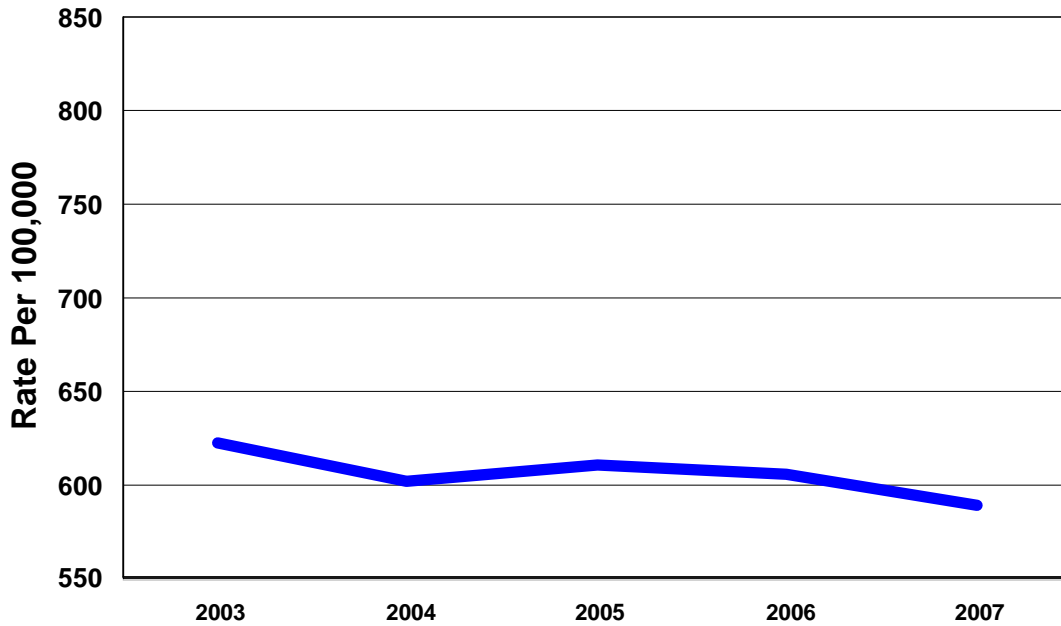


Note: See page 18 for the actual crime index offense rates and total number of offenses reported in each category for 2003-2007.

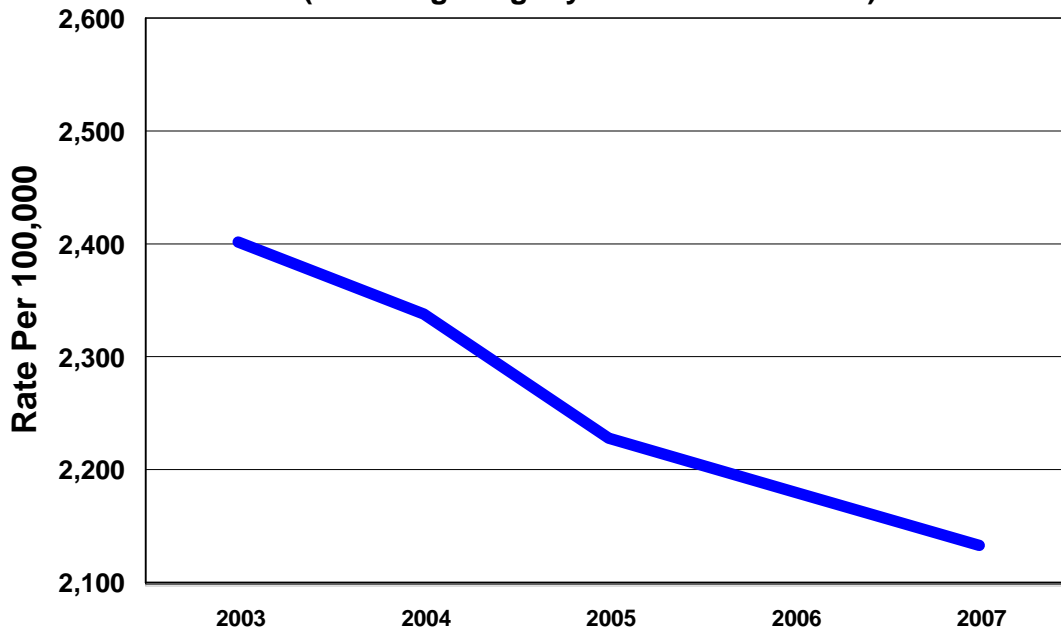
Crime Trends - A Historical Perspective

Crimes against property crime index offense rates declined in each category. Arson and motor vehicle theft remain the smallest percentage of the overall crimes against property crime index offense total.

Illinois Total Burglary Crime Index Offense Rate 2003-2007

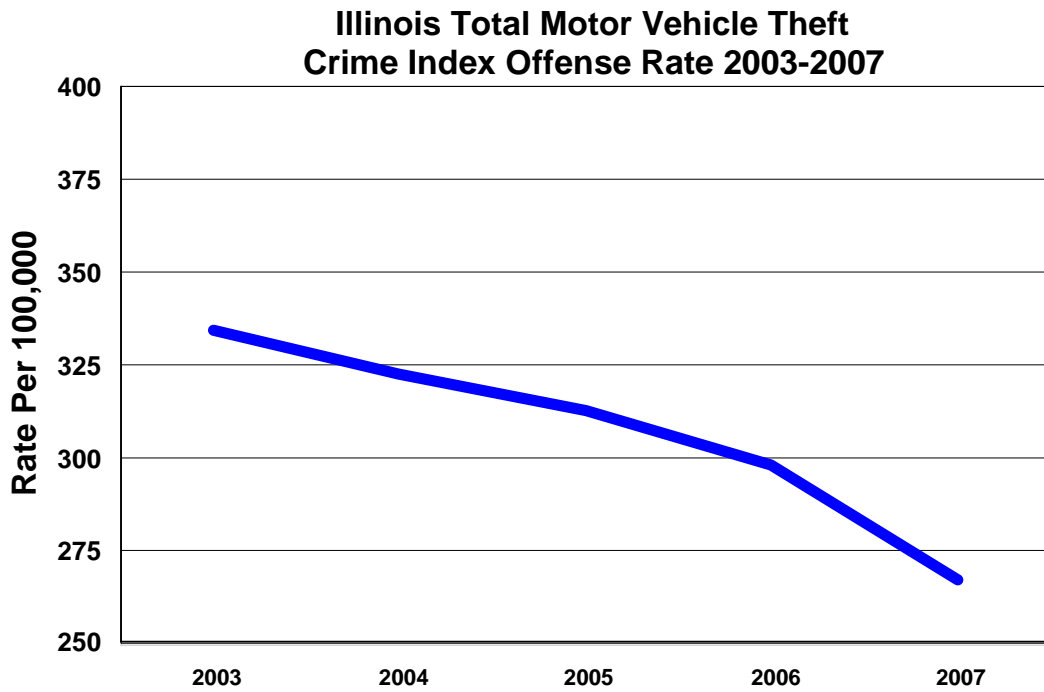


**Illinois Total Theft Crime Index Offense Rate 2003-2007
(Including Burglary from Motor Vehicle)**



Note: See page 18 for the actual crime index offense rates and total number of offenses reported in each category for 2003-2007.

Crime Trends - A Historical Perspective



Note: See page 18 for the actual crime index offense rates and total number of offenses reported in each category for 2003-2007.

Crime Trends - Violent Crimes/Property Crimes

Tables defined below provide comparisons of offense totals and rates among both independent and grouped jurisdictions of interest.

State Total - Statewide offense totals.

State Total Minus Chicago Police Department (CPD) - Statewide offense totals minus Chicago Police Department offense totals.

Chicago Police Department Total - Chicago Police Department offense totals.

Cook County Total - Cook County offense totals including Chicago Police Department offense totals.

Suburban Cook County Total - Cook County offense totals minus Chicago Police Department offense totals.

Collar Counties Total - Offense totals reported by sheriffs' offices, police departments, colleges, and universities located in DuPage, Kane, Lake, McHenry, and Will Counties.

Urban Counties Total - Offense totals reported by sheriffs' offices, police departments, colleges, and universities located in the following counties:

Bond	DeKalb	Kankakee	Marshall	Ogle	St. Clair	Woodford
Boone	Ford	Kendall	McLean	Peoria	Stark	
Calhoun	Grundy	Macon	Menard	Piatt	Tazewell	
Champaign	Henry	Macoupin	Mercer	Rock Island	Vermilion	
Clinton	Jersey	Madison	Monroe	Sangamon	Winnebago	

Rural Counties Total - Offense totals reported by sheriffs' offices, police departments, colleges, and universities located in the following counties:

Adams	Crawford	Gallatin	JoDaviess	Massac	Randolph	Washington
Alexander	Cumberland	Greene	Johnson	McDonough	Richland	Wayne
Brown	DeWitt	Hamilton	Knox	Montgomery	Saline	White
Bureau	Douglas	Hancock	LaSalle	Morgan	Schuyler	Whiteside
Carroll	Edgar	Hardin	Lawrence	Moultrie	Scott	Williamson
Cass	Edwards	Henderson	Lee	Perry	Shelby	
Christian	Effingham	Iroquois	Livingston	Pike	Stephenson	
Clark	Fayette	Jackson	Logan	Pope	Union	
Clay	Franklin	Jasper	Marion	Pulaski	Wabash	
Coles	Fulton	Jefferson	Mason	Putnam	Warren	

Counties are considered urban if their population consists of at least 50,000 residents or if they contribute at least 50,000 residents to a total Metropolitan Statistical Area (MSA) of 100,000. An area qualifies for recognition as an MSA in one of two ways: (1) if it includes a city of at least 50,000 population, or (2) if it includes an urbanized area of at least 50,000 population with a total metropolitan population of 100,000. The MSA comprises the central county or counties containing the core, plus adjacent outlying counties having a high degree of social and economical integration with the central county as measured through commuting ties. Those that are not part of an MSA are classified as rural counties.

State Total Crime Index Offenses 2003-2007

INDEX OFFENSE	YEAR	% OF TOTAL	NUMBER OF OFFENSES	% VOLUME CHANGE	CRIME RATE PER 100,000	% RATE CHANGE
Murder	2003	0.18	895	-6.9	7.1	-7.8
	2004	0.16	780	-12.8	6.2	-12.7
	2005	0.16	770	-1.3	6.1	-1.6
	2006	0.17	786	+2.1	6.2	+1.6
	2007	0.16	752	-4.3	5.9	-4.8
Criminal Sexual Assault	2003	1.18	5,852	-4.7	46.5	-5.1
	2004	1.21	5,862	+0.2	46.3	-0.4
	2005	1.27	6,017	+2.6	47.3	+2.2
	2006	1.22	5,729	-4.8	44.9	-5.1
	2007	1.23	5,596	-2.3	43.6	-2.9
Robbery	2003	4.78	23,813	-6.1	189.2	-6.5
	2004	4.65	22,611	-5.0	178.7	-5.5
	2005	4.90	23,283	+3.0	183.1	+2.5
	2006	5.09	23,941	+2.8	187.6	+2.5
	2007	5.07	23,135	-3.4	180.3	-3.9
Aggravated Assault, Aggravated Battery, Attempted Murder & Ritual Mutilation	2003	8.36	41,612	-9.2	330.6	-9.6
	2004	8.61	41,889	+0.7	331.0	+0.1
	2005	8.89	42,278	+0.9	332.5	+0.5
	2006	8.76	41,222	-2.5	323.0	-2.9
	2007	8.93	40,719	-1.2	317.3	-1.8
Violent Crimes Against Persons Subtotal	2003	14.50	72,172	-7.8	573.4	-8.2
	2004	14.62	71,142	-1.4	562.2	-2.0
	2005	15.22	72,348	+1.7	569.1	+1.2
	2006	15.23	71,678	-0.9	561.6	-1.3
	2007	15.39	70,202	-2.1	547.1	-2.6
Burglary	2003	15.74	78,345	-3.8	622.5	-4.2
	2004	15.64	76,088	-2.9	601.3	-3.4
	2005	16.33	77,635	+2.0	610.6	+1.5
	2006	16.52	77,749	+0.1	609.2	-0.2
	2007	16.56	75,524	-2.9	588.6	-3.4
Theft	2003	60.74	302,387	-2.9	2,402.5	-3.3
	2004	60.85	295,996	-2.1	2,339.2	-2.6
	2005	59.58	283,312	-4.3	2,228.4	-4.7
	2006	59.70	281,018	-0.8	2,201.8	-1.2
	2007	60.02	273,740	-2.6	2,133.3	-3.1
Motor Vehicle Theft	2003	8.45	42,069	-7.0	334.2	-7.4
	2004	8.39	40,796	-3.0	322.4	-3.5
	2005	8.36	39,739	-2.6	312.6	-3.0
	2006	8.05	37,900	-4.6	296.9	-5.0
	2007	7.52	34,281	-9.5	267.2	-10.0
Arson	2003	0.57	2,849	-4.7	22.6	-5.4
	2004	0.50	2,447	-14.1	19.3	-14.6
	2005	0.52	2,463	+0.7	19.4	+0.5
	2006	0.51	2,385	-3.2	18.7	-3.6
	2007	0.51	2,338	-2.0	18.2	-2.7
Crimes Against Property Subtotal	2003	85.50	425,650	-3.5	3,381.8	-3.9
	2004	85.38	415,327	-2.4	3,282.3	-2.9
	2005	84.78	403,149	-2.9	3,171.0	-3.4
	2006	84.77	399,052	-1.0	3,126.5	-1.4
	2007	84.61	385,883	-3.3	3,007.2	-3.8
Crimes Index Total	2003	100.00	497,822	-4.1	3,955.2	-4.6
	2004	100.00	486,469	-2.3	3,844.5	-2.8
	2005	100.00	475,497	-2.3	3,740.1	-2.7
	2006	100.00	470,730	-1.0	3,688.1	-1.4
	2007	100.00	456,085	-3.1	3,554.3	-3.6

State Total Minus CPD Illinois Crime Index Offenses 2003-2007

INDEX OFFENSE	YEAR	% OF TOTAL	NUMBER OF OFFENSES	% VOLUME CHANGE	CRIME RATE PER 100,000	% RATE CHANGE
Murder	2003	0.09	297	-4.2	3.1	-3.1
	2004	0.11	332	+11.8	3.4	+9.7
	2005	0.10	320	-3.6	3.2	-5.9
	2006	0.10	315	-1.6	3.2	0.0
	2007	0.10	309	-1.9	3.1	-3.1
Criminal Sexual Assault	2003	1.30	4,053	-1.5	41.8	-2.1
	2004	1.34	4,105	+1.3	42.0	+0.5
	2005	1.41	4,322	+5.3	43.9	+4.5
	2006	1.37	4,142	-4.2	41.8	-4.8
	2007	1.36	4,003	-3.4	40.0	-4.3
Robbery	2003	2.08	6,511	-4.5	67.1	-5.2
	2004	2.17	6,646	+2.1	67.9	+1.2
	2005	2.37	7,253	+9.1	73.6	+8.4
	2006	2.64	7,988	+10.1	80.5	+9.4
	2007	2.62	7,723	-3.3	77.2	-4.1
Aggravated Assault, Aggravated Battery, Attempted Murder & Ritual Mutilation	2003	6.98	21,828	-4.8	224.9	-5.5
	2004	7.52	23,069	+5.7	235.8	+4.8
	2005	7.92	24,245	+5.1	246.1	+4.4
	2006	7.80	23,643	-2.5	238.3	-3.2
	2007	7.90	23,305	-1.4	233.1	-2.2
Violent Crimes Against Persons Subtotal	2003	10.45	32,689	-4.3	336.9	-5.0
	2004	11.13	34,152	+4.5	349.0	+3.6
	2005	11.81	36,140	+5.8	366.9	+5.1
	2006	11.91	36,088	-0.1	363.8	-0.8
	2007	11.99	35,340	-2.1	353.4	-2.9
Burglary	2003	17.04	53,281	-4.6	549.1	-5.2
	2004	16.81	51,546	-3.3	526.8	-4.1
	2005	17.10	52,337	+1.5	531.3	+0.9
	2006	17.63	53,438	+2.1	538.6	+1.4
	2007	17.23	50,805	-4.9	508.1	-5.7
Theft	2003	65.74	205,608	-3.8	2,118.8	-4.5
	2004	65.64	201,345	-2.1	2,057.8	-2.9
	2005	65.37	200,077	-0.6	2,031.0	-1.3
	2006	64.60	195,786	-2.1	1,973.5	-2.8
	2007	64.90	191,322	-2.3	1,913.5	-3.0
Motor Vehicle Theft	2003	6.17	19,290	-4.1	198.8	-4.8
	2004	5.87	18,008	-6.6	184.0	-7.4
	2005	5.64	17,248	-4.2	175.1	-4.8
	2006	5.31	16,102	-6.6	162.3	-7.3
	2007	5.33	15,714	-2.4	157.2	-3.1
Arson	2003	0.61	1,902	-3.6	19.6	-4.4
	2004	0.55	1,675	-11.9	17.1	-12.8
	2005	0.58	1,780	+6.3	18.1	+5.8
	2006	0.55	1,673	-6.0	16.9	-6.6
	2007	0.55	1,633	-2.4	16.3	-3.6
Crimes Against Property Subtotal	2003	89.55	280,081	-4.0	2,886.2	-4.7
	2004	88.86	272,571	-2.7	2,785.8	-3.5
	2005	88.19	269,910	-1.0	2,739.8	-1.7
	2006	88.09	266,999	-1.1	2,691.3	-1.8
	2007	88.01	259,474	-2.8	2,595.1	-3.6
Crimes Index Total	2003	100.00	312,770	-4.0	3,223.0	-4.7
	2004	100.00	306,726	-1.9	3,134.8	-2.7
	2005	100.00	306,050	-0.2	3,106.7	-0.9
	2006	100.00	303,087	-1.0	3,055.0	-1.7
	2007	100.00	294,814	-2.7	2,948.5	-3.5

Offenses reported in the State total minus Chicago Police Department (CPD) area account for 64.6% of the state crime index offense total.

Chicago Police Department Crime Index Offenses 2003-2007

INDEX OFFENSE	YEAR	% OF TOTAL	NUMBER OF OFFENSES	% VOLUME CHANGE	CRIME RATE PER 100,000	% RATE CHANGE
Murder	2003	0.32	598	-8.1	20.7	-8.0
	2004	0.25	448	-25.1	15.6	-24.6
	2005	0.27	450	+0.4	15.7	+0.6
	2006	0.28	471	+4.7	16.6	+5.7
	2007	0.27	443	-5.9	15.6	-6.0
Criminal Sexual Assault	2003	0.97	1,799	-11.1	62.4	-10.7
	2004	0.98	1,757	-2.3	61.2	-1.9
	2005	1.00	1,695	-3.5	59.2	-3.3
	2006	0.95	1,587	-6.4	55.8	-5.7
	2007	0.99	1,593	+0.4	56.2	+0.7
Robbery	2003	9.35	17,302	-6.6	600.3	-6.2
	2004	8.88	15,965	-7.7	556.4	-7.3
	2005	9.46	16,030	+0.4	560.1	+0.7
	2006	9.52	15,953	-0.5	561.2	+0.2
	2007	9.56	15,412	-3.4	544.0	-3.1
Aggravated Assault, Aggravated Battery, Attempted Murder & Ritual Mutilation	2003	10.69	19,784	-13.6	686.4	-13.3
	2004	10.47	18,820	-4.9	656.0	-4.4
	2005	10.64	18,033	-4.2	630.0	-4.0
	2006	10.49	17,579	-2.5	618.4	-1.8
	2007	10.80	17,414	-0.9	614.6	-0.6
Violent Crimes Against Persons Subtotal	2003	21.34	39,483	-10.5	1,369.9	-10.1
	2004	20.58	36,990	-6.3	1,289.2	-5.9
	2005	21.37	36,208	-2.1	1,265.0	-1.9
	2006	21.23	35,590	-1.7	1,252.1	-1.0
	2007	21.62	34,862	-2.0	1,230.4	-1.7
Burglary	2003	13.54	25,064	-2.1	869.6	-1.7
	2004	13.65	24,542	-2.1	855.4	-1.6
	2005	14.93	25,298	+3.1	883.9	+3.3
	2006	14.50	24,311	-3.9	855.3	-3.2
	2007	15.33	24,719	+1.7	872.4	+2.0
Theft	2003	52.30	96,779	-0.7	3,357.7	-0.3
	2004	52.66	94,651	-2.2	3,299.0	-1.7
	2005	49.12	83,235	-12.1	2,908.0	-11.9
	2006	50.84	85,232	+2.4	2,998.5	+3.1
	2007	51.11	82,418	-3.3	2,908.9	-3.0
Motor Vehicle Theft	2003	12.31	22,779	-9.2	790.3	-8.8
	2004	12.68	22,788	0.0	794.3	+0.5
	2005	13.27	22,491	-1.3	785.8	-1.1
	2006	13.00	21,798	-3.1	766.9	-2.4
	2007	11.51	18,567	-14.8	655.3	-14.6
Arson	2003	0.51	947	-6.8	32.9	-6.3
	2004	0.43	772	-18.5	26.9	-18.2
	2005	0.40	683	-11.5	23.9	-11.2
	2006	0.42	712	+4.2	25.0	+4.6
	2007	0.44	705	-1.0	24.9	-0.4
Crimes Against Property Subtotal	2003	78.66	145,569	-2.4	5,050.5	-2.0
	2004	79.42	142,756	-1.9	4,975.6	-1.5
	2005	78.63	133,239	-6.7	4,655.1	-6.4
	2006	78.77	132,053	-0.9	4,645.6	-0.2
	2007	78.38	126,409	-4.3	4,461.5	-4.0
Crimes Index Total	2003	100.00	185,052	-4.3	6,420.4	-3.9
	2004	100.00	179,743	-2.9	6,264.7	-2.4
	2005	100.00	169,447	-5.7	5,920.1	-5.5
	2006	100.00	167,643	-1.1	5,897.7	-0.4
	2007	100.00	161,271	-3.8	5,691.9	-3.5

Offenses reported by the Chicago Police Department account for 35.4% of the state crime index offense total.

Cook County Crime Index Offenses 2003-2007

INDEX OFFENSE	YEAR	% OF TOTAL	NUMBER OF OFFENSES	% VOLUME CHANGE	CRIME RATE PER 100,000	% RATE CHANGE
Murder	2003	0.26	695	-5.6	12.9	-5.8
	2004	0.21	554	-20.3	10.4	-19.4
	2005	0.22	550	-0.7	10.3	-1.0
	2006	0.23	579	+5.3	10.9	+5.8
	2007	0.22	523	-9.7	9.9	-9.2
Criminal Sexual Assault	2003	0.90	2,425	-11.0	45.2	-10.7
	2004	0.91	2,397	-1.2	45.0	-0.4
	2005	0.97	2,417	+0.8	45.4	+0.9
	2006	0.95	2,331	-3.6	44.0	-3.1
	2007	0.94	2,255	-3.3	42.6	-3.2
Robbery	2003	7.33	19,761	-5.6	368.2	-5.3
	2004	7.01	18,365	-7.1	344.7	-6.4
	2005	7.49	18,685	+1.7	350.7	+1.7
	2006	7.70	19,000	+1.7	358.2	+2.1
	2007	7.66	18,288	-3.7	345.8	-3.5
Aggravated Assault, Aggravated Battery, Attempted Murder & Ritual Mutilation	2003	8.75	23,584	-12.8	439.4	-12.6
	2004	8.68	22,753	-3.5	427.1	-2.8
	2005	8.98	22,389	-1.6	420.2	-1.6
	2006	8.67	21,396	-4.4	403.4	-4.0
	2007	8.64	20,646	-3.5	390.4	-3.2
Violent Crimes Against Persons Subtotal	2003	17.24	46,465	-9.7	865.7	-9.4
	2004	16.81	44,069	-5.2	827.2	-4.4
	2005	17.66	44,041	-0.1	826.6	-0.1
	2006	17.56	43,306	-1.7	816.5	-1.2
	2007	17.46	41,712	-3.7	788.7	-3.4
Burglary	2003	13.75	37,047	-4.7	690.3	-4.4
	2004	13.78	36,111	-2.5	677.8	-1.8
	2005	14.92	37,216	+3.1	698.5	+3.1
	2006	14.68	36,204	-2.7	682.6	-2.3
	2007	15.28	36,508	+0.8	690.3	+1.1
Theft	2003	57.15	154,040	-2.7	2,870.0	-2.4
	2004	57.55	150,871	-2.1	2,831.8	-1.3
	2005	55.27	137,825	-8.6	2,586.9	-8.6
	2006	55.95	138,002	+0.1	2,602.0	+0.6
	2007	56.48	134,930	-2.2	2,551.3	-1.9
Motor Vehicle Theft	2003	11.35	30,597	-8.7	570.1	-8.4
	2004	11.43	29,959	-2.1	562.3	-1.4
	2005	11.73	29,245	-2.4	548.9	-2.4
	2006	11.36	28,025	-4.2	528.4	-3.7
	2007	10.35	24,729	-11.8	467.6	-11.5
Arson	2003	0.51	1,373	-3.9	25.6	-3.4
	2004	0.43	1,132	-17.6	21.2	-17.2
	2005	0.42	1,045	-7.7	19.6	-7.5
	2006	0.45	1,119	+7.1	21.1	+7.7
	2007	0.43	1,018	-9.0	19.2	-9.0
Crimes Against Property Subtotal	2003	82.76	223,057	-3.9	4,155.9	-3.6
	2004	83.19	218,073	-2.2	4,093.1	-1.5
	2005	82.34	205,331	-5.8	3,854.0	-5.8
	2006	82.44	203,350	-1.0	3,834.1	-0.5
	2007	82.54	197,185	-3.0	3,728.5	-2.8
Crimes Index Total	2003	100.00	269,522	-4.9	5,021.7	-4.7
	2004	100.00	262,142	-2.7	4,920.3	-2.0
	2005	100.00	249,372	-4.9	4,680.6	-4.9
	2006	100.00	246,656	-1.1	4,650.7	-0.6
	2007	100.00	238,897	-3.1	4,517.2	-2.9

Offenses reported in Cook County account for 52.4% of the state crime index offense total.

Suburban Cook County Crime Index Offenses 2003-2007

INDEX OFFENSE	YEAR	% OF TOTAL	NUMBER OF OFFENSES	% VOLUME CHANGE	CRIME RATE PER 100,000	% RATE CHANGE
Murder	2003	0.11	97	+14.1	3.9	+14.7
	2004	0.13	106	+9.3	4.3	+10.3
	2005	0.13	100	-5.7	4.1	-4.7
	2006	0.14	108	+8.0	4.4	+7.3
	2007	0.10	80	-25.9	3.3	-25.0
Criminal Sexual Assault	2003	0.74	626	-10.7	25.2	-10.6
	2004	0.78	640	+2.2	26.0	+3.2
	2005	0.90	722	+12.8	29.3	+12.7
	2006	0.94	744	+3.0	30.2	+3.1
	2007	0.85	662	-11.0	27.0	-10.6
Robbery	2003	2.91	2,459	+2.0	99.0	+2.3
	2004	2.91	2,400	-2.4	97.6	-1.4
	2005	3.32	2,655	+10.6	107.7	+10.3
	2006	3.86	3,047	+14.8	123.8	+14.9
	2007	3.70	2,876	-5.6	117.1	-5.4
Aggravated Assault, Aggravated Battery, Attempted Murder & Ritual Mutilation	2003	4.50	3,800	-8.5	152.9	-8.3
	2004	4.77	3,933	+3.5	160.0	+4.6
	2005	5.45	4,356	+10.8	176.7	+10.4
	2006	4.83	3,817	-12.4	155.1	-12.2
	2007	4.16	3,232	-15.3	131.6	-15.2
Violent Crimes Against Persons Subtotal	2003	8.27	6,982	-5.0	281.0	-4.8
	2004	8.59	7,079	+1.4	287.9	+2.5
	2005	9.80	7,833	+10.7	317.7	+10.4
	2006	9.77	7,716	-1.5	313.5	-1.3
	2007	8.82	6,850	-11.2	279.0	-11.0
Burglary	2003	14.19	11,983	-9.6	482.2	-9.4
	2004	14.04	11,569	-3.5	470.5	-2.4
	2005	14.91	11,918	+3.0	483.4	+2.7
	2006	15.05	11,893	-0.2	483.2	0.0
	2007	15.19	11,789	-0.9	480.1	-0.6
Theft	2003	67.79	57,261	-5.8	2,304.3	-5.6
	2004	68.23	56,220	-1.8	2,286.6	-0.8
	2005	68.30	54,590	-2.9	2,214.1	-3.2
	2006	66.79	52,770	-3.3	2,144.1	-3.2
	2007	67.65	52,512	-0.5	2,138.7	-0.3
Motor Vehicle Theft	2003	9.26	7,818	-7.2	314.6	-7.1
	2004	8.70	7,171	-8.3	291.7	-7.3
	2005	8.45	6,754	-5.8	273.9	-6.1
	2006	7.88	6,227	-7.8	253.0	-7.6
	2007	7.94	6,162	-1.0	251.0	-0.8
Arson	2003	0.50	426	+3.1	17.1	+3.0
	2004	0.44	360	-15.5	14.6	-14.6
	2005	0.45	362	+0.6	14.7	+0.7
	2006	0.52	407	+12.4	16.5	+12.2
	2007	0.40	313	-23.1	12.7	-23.0
Crimes Against Property Subtotal	2003	91.73	77,488	-6.5	3,118.3	-6.3
	2004	91.41	75,317	-2.8	3,063.3	-1.8
	2005	90.20	72,092	-4.3	2,924.0	-4.5
	2006	90.23	71,297	-1.1	2,896.9	-0.9
	2007	91.18	70,776	-0.7	2,882.5	-0.5
Crimes Index Total	2003	100.00	84,470	-6.4	3,399.3	-6.2
	2004	100.00	82,399	-2.5	3,351.4	-1.4
	2005	100.00	79,925	-3.0	3,241.7	-3.3
	2006	100.00	79,013	-1.1	3,210.4	-1.0
	2007	100.00	77,626	-1.8	3,161.5	-1.5

Offenses reported in suburban Cook County account for 17.0% of the state crime index offense total.

Collar Counties Crime Index Offenses 2003-2007

INDEX OFFENSE	YEAR	% OF TOTAL	NUMBER OF OFFENSES	% VOLUME CHANGE	CRIME RATE PER 100,000	% RATE CHANGE
Murder	2003	0.09	63	0.0	2.2	0.0
	2004	0.10	67	+6.3	2.3	+4.5
	2005	0.09	62	-7.5	2.1	-8.7
	2006	0.07	46	-25.8	1.5	-28.6
	2007	0.09	59	+28.3	1.9	+26.7
Criminal Sexual Assault	2003	1.19	831	+6.3	28.9	+4.0
	2004	1.20	836	+0.6	28.4	-1.7
	2005	1.17	826	-1.2	27.5	-3.2
	2006	1.24	866	+4.8	28.3	+2.9
	2007	1.25	845	-2.4	27.1	-4.2
Robbery	2003	1.69	1,181	+7.8	41.1	+5.4
	2004	1.66	1,158	-1.9	39.4	-4.1
	2005	1.77	1,247	+7.7	41.5	+5.3
	2006	1.87	1,302	+4.4	42.5	+2.4
	2007	1.86	1,262	-3.1	40.4	-4.9
Aggravated Assault, Aggravated Battery, Attempted Murder & Ritual Mutilation	2003	5.02	3,508	-11.5	122.1	-13.3
	2004	4.96	3,456	-1.5	117.5	-3.8
	2005	5.16	3,631	+5.1	120.9	+2.9
	2006	5.38	3,752	+3.3	122.6	+1.4
	2007	5.64	3,824	+1.9	122.6	0.0
Violent Crimes Against Persons Subtotal	2003	8.00	5,583	-5.5	194.3	-7.4
	2004	7.91	5,517	-1.2	187.6	-3.4
	2005	8.20	5,766	+4.5	191.9	+2.3
	2006	8.69	6,066	+5.2	198.2	+3.3
	2007	8.83	5,990	-1.3	192.0	-3.1
Burglary	2003	13.41	9,365	-2.0	325.9	-4.1
	2004	13.67	9,530	+1.8	324.1	-0.6
	2005	13.62	9,578	+0.5	318.8	-1.6
	2006	14.31	9,988	+4.3	326.3	+2.4
	2007	14.44	9,793	-2.0	313.9	-3.8
Theft	2003	73.18	51,092	-0.9	1,778.0	-3.0
	2004	73.29	51,090	0.0	1,737.7	-2.3
	2005	73.37	51,597	+1.0	1,717.4	-1.2
	2006	72.68	50,731	-1.7	1,657.5	-3.5
	2007	72.23	48,972	-3.5	1,569.6	-5.3
Motor Vehicle Theft	2003	4.61	3,216	-0.8	111.9	-2.9
	2004	4.44	3,095	-3.8	105.3	-5.9
	2005	4.15	2,918	-5.7	97.1	-7.8
	2006	3.92	2,736	-6.2	89.4	-7.9
	2007	3.92	2,658	-2.9	85.2	-4.7
Arson	2003	0.80	557	+6.7	19.4	+4.3
	2004	0.69	481	-13.6	16.4	-15.5
	2005	0.66	467	-2.9	15.5	-5.5
	2006	0.55	381	-18.4	12.4	-20.0
	2007	0.57	388	+1.8	12.4	0.0
Crimes Against Property Subtotal	2003	92.00	64,230	-1.0	2,235.2	-3.1
	2004	92.09	64,196	-0.1	2,183.4	-2.3
	2005	91.80	64,560	+0.6	2,148.9	-1.6
	2006	91.45	63,836	-1.1	2,085.7	-2.9
	2007	91.15	61,801	-3.2	1,980.8	-5.0
Crimes Index Total	2003	100.00	69,813	-1.4	2,429.5	-3.4
	2004	100.00	69,713	-0.1	2,371.1	-2.4
	2005	100.00	70,326	+0.9	2,340.8	-1.3
	2006	100.00	69,802	-0.7	2,280.6	-2.6
	2007	100.00	67,801	-2.9	2,173.1	-4.7

Offenses reported in the collar counties account for 14.9% of the state crime index offense total.

Urban Counties Crime Index Offenses 2003-2007

INDEX OFFENSE	YEAR	% OF TOTAL	NUMBER OF OFFENSES	% VOLUME CHANGE	CRIME RATE PER 100,000	% RATE CHANGE
Murder	2003	0.09	102	-23.9	3.8	-24.0
	2004	0.11	120	+17.6	4.5	+18.4
	2005	0.13	143	+19.2	5.3	+17.8
	2006	0.12	131	-8.4	4.8	-9.4
	2007	0.14	151	+15.3	5.5	+14.6
Criminal Sexual Assault	2003	1.50	1,704	-9.5	63.0	-10.1
	2004	1.64	1,799	+5.6	67.3	+6.8
	2005	1.67	1,852	+2.9	68.7	+2.1
	2006	1.51	1,659	-10.4	61.1	-11.1
	2007	1.57	1,676	+1.0	61.0	-0.2
Robbery	2003	2.22	2,515	-13.6	93.0	-14.2
	2004	2.48	2,728	+8.5	102.0	+9.7
	2005	2.67	2,952	+8.2	109.6	+7.5
	2006	2.95	3,243	+9.9	119.4	+8.9
	2007	3.05	3,247	+0.1	118.3	-0.9
Aggravated Assault, Aggravated Battery, Attempted Murder & Ritual Mutilation	2003	8.80	9,978	-3.8	368.8	-4.6
	2004	10.17	11,170	+11.9	417.8	+13.3
	2005	10.31	11,416	+2.2	423.7	+1.4
	2006	10.13	11,140	-2.4	410.3	-3.2
	2007	11.01	11,736	+5.4	427.5	+4.2
Violent Crimes Against Persons Subtotal	2003	12.60	14,299	-6.6	528.5	-7.3
	2004	14.41	15,817	+10.6	591.7	+12.0
	2005	14.78	16,363	+3.5	607.4	+2.7
	2006	14.71	16,173	-1.2	595.6	-1.9
	2007	15.76	16,810	+3.9	612.3	+2.8
Burglary	2003	20.03	22,718	-5.3	839.7	-6.0
	2004	19.35	21,243	-6.5	794.6	-5.4
	2005	19.53	21,630	+1.8	802.9	+1.0
	2006	20.48	22,519	+4.1	829.3	+3.3
	2007	19.16	20,434	-9.3	744.3	-10.2
Theft	2003	60.95	69,143	-4.1	2,555.8	-4.9
	2004	60.09	65,976	-4.6	2,467.9	-3.4
	2005	59.64	66,041	+0.1	2,451.3	-0.7
	2006	59.01	64,886	-1.7	2,389.6	-2.5
	2007	59.14	63,064	-2.8	2,297.1	-3.9
Motor Vehicle Theft	2003	5.87	6,659	-2.6	246.1	-3.3
	2004	5.63	6,184	-7.1	231.3	-6.0
	2005	5.45	6,034	-2.4	224.0	-3.2
	2006	5.21	5,727	-5.1	210.9	-5.8
	2007	5.26	5,611	-2.0	204.4	-3.1
Arson	2003	0.55	623	-14.1	23.0	-14.8
	2004	0.53	582	-6.6	21.8	-5.2
	2005	0.60	668	+14.8	24.8	+13.8
	2006	0.60	660	-1.2	24.3	-2.0
	2007	0.67	711	+7.7	25.9	+6.6
Crimes Against Property Subtotal	2003	87.40	99,143	-1.5	3,664.7	-2.3
	2004	85.59	93,985	-5.2	3,515.6	-4.1
	2005	85.22	94,373	+0.4	3,502.9	-0.4
	2006	85.29	93,792	-0.6	3,454.1	-1.4
	2007	93.61	99,820	+6.4	3,635.9	+5.3
Crimes Index Total	2003	100.00	113,442	-4.7	4,193.2	-5.4
	2004	100.00	109,802	-3.2	4,107.3	-2.0
	2005	100.00	110,736	+0.9	4,110.3	+0.1
	2006	100.00	109,965	-0.7	4,049.7	-1.5
	2007	100.00	106,630	-3.0	3,884.0	-4.1

Offenses reported in urban counties account for 23.4% of the state crime index offense total.

Rural Counties Crime Index Offenses 2003-2007

INDEX OFFENSE	YEAR	% OF TOTAL	NUMBER OF OFFENSES	% VOLUME CHANGE	CRIME RATE PER 100,000	% RATE CHANGE
Murder	2003	0.08	35	+25.0	2.1	+23.5
	2004	0.08	38	+8.6	2.3	+9.5
	2005	0.03	15	-60.5	0.9	-60.9
	2006	0.07	30	+100.0	1.8	+100.0
	2007	0.04	19	-36.7	1.1	-38.9
Criminal Sexual Assault	2003	1.98	892	+19.1	54.4	+19.6
	2004	1.85	830	-7.0	49.2	-9.6
	2005	2.05	922	+11.1	54.6	+11.0
	2006	1.97	873	-5.3	51.9	-4.9
	2007	1.92	820	-6.1	48.9	-5.8
Robbery	2003	0.79	356	-10.8	21.7	-10.3
	2004	0.80	359	+0.8	21.3	-1.8
	2005	0.89	399	+11.1	23.6	+10.8
	2006	0.89	396	-0.8	23.5	-0.4
	2007	0.79	338	-14.6	20.1	-14.5
Aggravated Assault, Aggravated Battery, Attempted Murder & Ritual Mutilation	2003	10.09	4,541	+2.5	276.8	+2.9
	2004	10.07	4,510	-0.7	267.1	-3.5
	2005	10.75	4,841	+7.3	286.9	+7.4
	2006	11.14	4,931	+1.9	292.9	+2.1
	2007	10.56	4,513	-8.5	269.0	-8.2
Violent Crimes Against Persons Subtotal	2003	12.94	5,824	+3.9	355.1	+4.3
	2004	12.81	5,737	-1.5	339.8	-4.3
	2005	13.72	6,177	+7.7	366.1	+7.7
	2006	14.07	6,230	+0.9	370.0	+1.1
	2007	13.31	5,690	-8.7	339.1	-8.4
Burglary	2003	20.47	9,212	+2.2	561.6	+2.6
	2004	20.55	9,203	-0.1	545.0	-3.0
	2005	20.45	9,211	+0.1	545.9	+0.2
	2006	20.42	9,038	-1.9	536.8	-1.7
	2007	20.57	8,790	-2.7	523.9	-2.4
Theft	2003	62.39	28,078	-4.1	1,711.7	-3.8
	2004	62.61	28,038	-0.1	1,660.5	-3.0
	2005	61.78	27,823	-0.8	1,648.9	-0.7
	2006	61.82	27,368	-1.6	1,625.6	-1.4
	2007	62.60	26,752	-2.3	1,594.4	-1.9
Motor Vehicle Theft	2003	3.54	1,595	-0.7	97.2	-0.4
	2004	3.46	1,551	-2.8	91.9	-5.5
	2005	3.42	1,540	-0.7	91.3	-0.7
	2006	3.18	1,409	-8.5	83.7	-8.3
	2007	3.00	1,282	-9.0	76.4	-8.7
Arson	2003	0.66	296	-5.4	18.0	-5.3
	2004	0.56	252	-14.9	14.9	-17.2
	2005	0.63	283	+12.3	16.8	+12.8
	2006	0.51	224	-20.8	13.3	-20.8
	2007	0.52	221	-1.3	13.2	-0.8
Crimes Against Property Subtotal	2003	87.06	39,181	-2.6	2,388.6	-2.2
	2004	87.19	39,044	-0.3	2,312.4	-3.2
	2005	86.28	38,857	-0.5	2,302.8	-0.4
	2006	85.93	38,039	-2.1	2,259.4	-1.9
	2007	86.69	37,045	-2.6	2,207.9	-2.3
Crimes Index Total	2003	100.00	45,005	-1.8	2,743.7	-1.4
	2004	100.00	44,781	-0.5	2,652.1	-3.3
	2005	100.00	45,034	+0.6	2,668.8	+0.6
	2006	100.00	44,269	-1.7	2,629.5	-1.5
	2007	100.00	42,735	-3.5	2,547.0	-3.1

Offenses reported in rural counties account for 9.4% of the state crime index offense total.

