

SECTION IV - SUPPLEMENTAL DATA

DOMESTIC CRIMES, CRIMES AGAINST CHILDREN, CRIMES AGAINST SCHOOL PERSONNEL, HATE CRIMES DATA

In April 1996, the Illinois State Police began the collection of additional crime information. This data includes statistics pertaining to offenses mandated by state statutes and offenses concerning children. The following data in this section reflects crimes having occurred from January 1, 2000, through December 31, 2000. Due to limitations on agencies' reporting systems, all agencies are not included in the totals presented in the following tables. In some cases, the percentages may not equal 100 due to rounding.

Domestic Crimes

The following data in this category reflects crimes which are domestic-related. Reporting of domestic violence is mandated by Chapter 20 of the Illinois Compiled Statutes, 2630/5.1. Domestic-related is defined as family or household members which include spouses, former spouses, parents, children, stepchildren and other persons related by blood or marriage, persons who share or formerly shared a common dwelling and persons who have or allegedly have a child in common. In the case of a high-risk adult with disabilities, family or household member includes any person who has the responsibility for a high-risk adult as a result of a family relationship or who has assumed responsibility for all or a portion of the care of a high-risk adult with disabilities voluntarily, or by express or implied contract, or court order.

Crimes Against Children

Although reporting in this category is not mandated by state statutes, information is collected to research and evaluate the problems of offenses against children. Contributing agencies are not required to report this data to the I-UCR Program. All crimes committed against children 16 years and younger are included in this category.

Crimes Against School Personnel

The reporting of attacks on school personnel is mandated by Chapter 105 of the Illinois Compiled Statutes, 5/10-21.7. The Uniform Crime Reporting Program collects information relating to all crimes committed against teachers, teacher personnel, administrative personnel or educational support personnel. These persons can include teachers' aides, bus drivers or janitors etc. who are employed by the school.

Hate Crimes

The reporting of hate crime information is mandated by Chapter 20 of the Illinois Compiled Statutes, 2605/55a. A hate crime is committed when, by reason of the actual or perceived race, color, creed, religion, ancestry, gender, sexual orientation, physical or mental disability, or national origin of another individual or group of individuals, a person commits assault, battery, aggravated assault, misdemeanor theft, criminal trespass to residence, misdemeanor criminal damage to property, criminal trespass to vehicle, criminal trespass to real property, mob action or disorderly conduct.

Domestic Crimes - Annual 2000/1999 State Totals

Type of Offenses

Crime by Category	2000 # of Offenses	2000 % of Total	1999 # of Offenses	1999 % of Total
Murder	31	0.0%	54	0.0%
Criminal Sexual Assault	641	0.6%	1,113	0.9%
Robbery	381	0.4%	773	0.6%
Aggravated Assault/Battery	6,592	6.3%	9,361	7.4%
Simple Assault/Battery	71,607	67.9%	84,247	66.6%
Burglary	447	0.4%	518	0.4%
Theft/Burglary to Vehicle	2,427	2.3%	3,149	2.5%
Motor Vehicle Theft	80	0.1%	136	0.1%
Arson	18	0.0%	78	0.1%
Criminal Damage/Trespass	5,637	5.3%	5,984	4.7%
Sex Offenses	638	0.6%	1,193	0.9%
Offenses Involving Children	2,010	1.9%	3,200	2.5%
Disorderly Conduct	4,412	4.2%	5,102	4.0%
Intimidation	158	0.1%	133	0.1%
Kidnapping	908	0.9%	1,297	1.0%
Deadly Weapons	30	0.0%	29	0.0%
Violation of Orders of Protection	4,574	4.3%	4,784	3.8%
All Other Offenses	4,820	4.6%	5,281	4.2%
TOTAL	105,411	100.0%	126,432	100.0%

Domestic Crimes by Relationship*

Family Related

Relationship Type	Group Percent	Relationship	Percent of Total
Marital	51.5%	Spouse	44.0%
		Ex-Spouse	6.0%
		Common-law Spouse	1.5%
Parental/ Child	31.8%	Parent	11.7%
		Step-Parent	1.2%
		Grandparent	0.7%
		Child	14.2%
		Step-Child	2.2%
		Grandchild	0.5%
		Child of Boyfriend/Girlfriend	1.3%
Other Family	16.8%	Sibling	9.7%
		Step-Sibling	0.4%
		In-law	1.3%
		Other Family	5.4%

Other Domestic Related

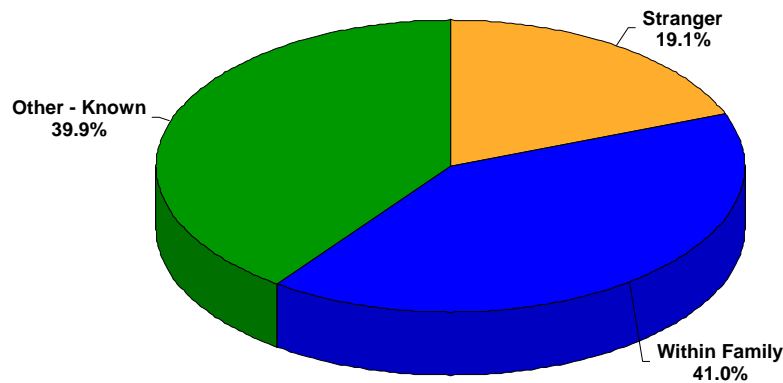
Relationship	Percent of Total
Boyfriend/Girlfriend	84.9%
Same Sex Relationship	1.1%
Child in Common with Offender	5.4%
*Friend	2.4%
*Otherwise Known	6.2%

* includes roommates/personal care attendants, etc.

* Due to software issues, the 'Relationship Type' is unavailable from Chicago PD's data and is not represented in the 'Domestic Crimes by Relationship' tables.

2000 State Totals

Relationship Type*



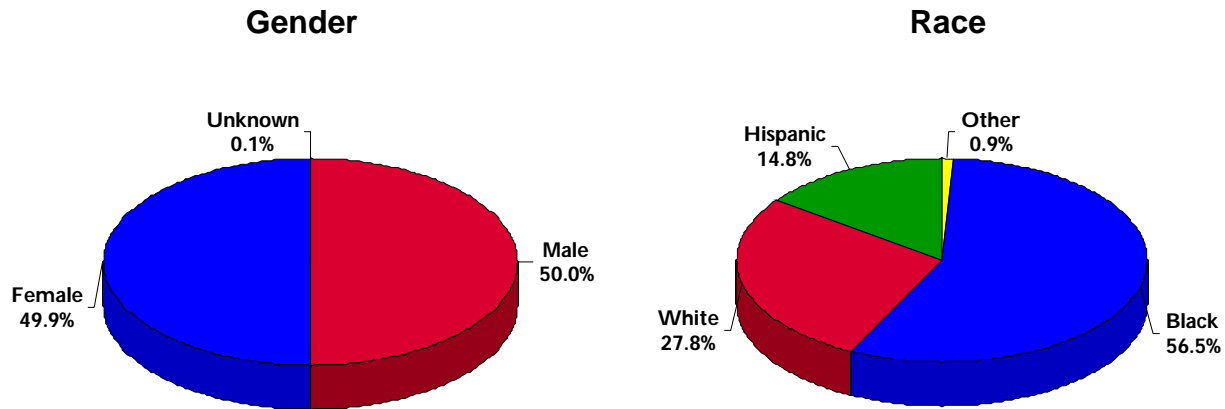
* Does not include 'Relationship Type' information from Chicago Police Department's data due to software issues.

**2000/1999 Comparison
Victim Age**

Age	2000	2000	1999	1999
	# of Offenses	% of Total	# of Offenses	% of Total
Under 1	212	0.5%	198	0.5%
1	791	1.9%	554	1.5%
2	837	2.0%	592	1.6%
3	856	2.0%	633	1.8%
4	891	2.1%	638	1.8%
5	918	2.1%	716	2.0%
6	1,007	2.4%	839	2.3%
7	1,321	3.1%	1,011	2.8%
8	1,578	3.7%	1,324	3.7%
9	1,923	4.5%	1,535	4.2%
10	2,408	5.6%	1,848	5.1%
11	2,783	6.5%	2,358	6.5%
12	3,740	8.8%	3,160	8.7%
13	4,642	10.9%	3,957	11.0%
14	5,588	13.1%	4,935	13.7%
15	6,309	14.8%	5,618	15.6%
16	6,905	16.2%	6,203	17.2%
Total	42,709	100.0%	36,119	100.0%

Crimes Against Children

2000 State Totals

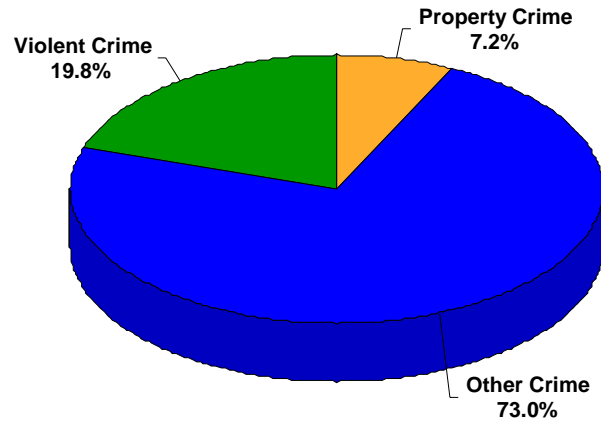


Offense Type by Age Group

Crime by Category	Ages Under 1 to 5 Years	% of Category Total	Ages 6 to 12 Years	% of Category Total	Ages 13 to 16 Years	% of Category Total	Total Under 1 to 16 Years	% of Total (42,709)
Murder	14	23.3%	4	6.7%	42	70.0%	60	0.1%
Criminal Sexual Assault	308	19.6%	544	34.6%	720	45.8%	1,572	3.7%
Robbery	51	2.5%	625	30.3%	1,386	67.2%	2,062	4.8%
Aggravated Assault/Battery	279	5.8%	1,522	31.9%	2,970	62.3%	4,771	11.2%
Simple Assault/Battery	855	4.1%	7,130	34.1%	12,935	61.8%	20,920	49.0%
Burglary	5	3.1%	32	19.8%	125	77.2%	162	0.4%
Theft/Burglary to Vehicle	58	2.1%	1,036	36.8%	1,720	61.1%	2,814	6.6%
Motor Vehicle Theft	6	14.3%	1	2.4%	35	83.3%	42	0.1%
Arson	19	32.2%	23	39.0%	17	28.8%	59	0.1%
Sex Offenses	337	13.7%	947	38.6%	1,169	47.7%	2,453	5.7%
Offenses Involving Children	1,827	43.6%	1,672	39.9%	688	16.4%	4,187	9.8%
Intimidation	1	0.9%	29	25.4%	84	73.7%	114	0.3%
Kidnapping	565	36.8%	685	44.7%	284	18.5%	1,534	3.6%
All Other Offenses	180	9.2%	510	26.0%	1,269	64.8%	1,959	4.6%
Total	4,505	10.5%	14,760	34.6%	23,444	54.9%	42,709	100.0%

2000 State Totals

Offense Type



**2000/1999 Comparison
Offense Type**

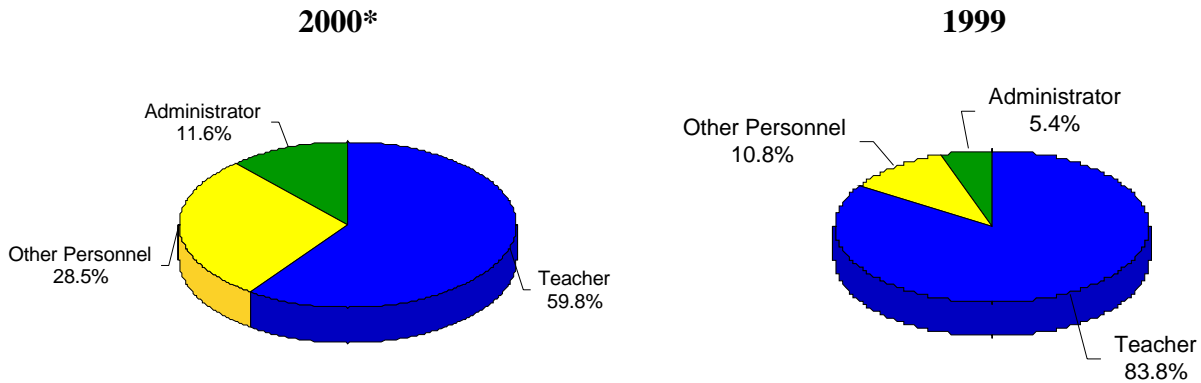
Crime by Category	2000 # of Offenses	2000 % of Total	1999 # of Offenses	1999 % of Total
Murder	60	0.1%	51	0.1%
Criminal Sexual Assault	1,572	3.7%	1,286	3.6%
Robbery	2,062	4.8%	2,235	6.2%
Aggravated Assault/Battery	4,771	11.2%	4,536	12.6%
Simple Assault/Battery	20,920	49.0%	18,084	50.1%
Burglary	162	0.4%	102	0.3%
Theft/Burglary to Vehicle	2,814	6.6%	2,048	5.7%
Motor Vehicle Theft	42	0.1%	14	0.0%
Arson	59	0.1%	18	0.0%
Sex Offenses	2,453	5.7%	1,924	5.3%
Offenses Involving Children	4,187	9.8%	3,302	9.1%
Intimidation	114	0.3%	92	0.3%
Kidnapping	1,534	3.6%	744	2.1%
All Other Offenses	1,959	4.6%	1,683	4.7%
Total	42,709	100.0%	36,119	100.0%

Crimes Against School Personnel

2000 State Totals 2000/1999 Comparison Type of Offenses

Crime by Category	2000 # of Offenses	2000 % of Total	1999 # of Offenses	1999 % of Total
Battery	923	59.8%	948	54.9%
Assault	501	32.4%	653	37.8%
Disorderly Conduct	33	2.1%	61	3.5%
Theft	30	1.9%	25	1.4%
Criminal Damage to Property	29	1.9%	24	1.4%
Robbery	4	0.3%	4	0.2%
Intimidation	1	0.1%	1	0.1%
Kidnapping	2	0.1%	1	0.1%
Deadly Weapons	8	0.5%	8	0.5%
Sex Offenses	2	0.1%	1	0.1%
Burglary	5	0.3%	0	0.0%
Violations of Order of Protection	1	0.1%	0	0.0%
All Other Offenses	5	0.3%	1	0.1%
Total	1,544	100.0%	1,727	100.0%

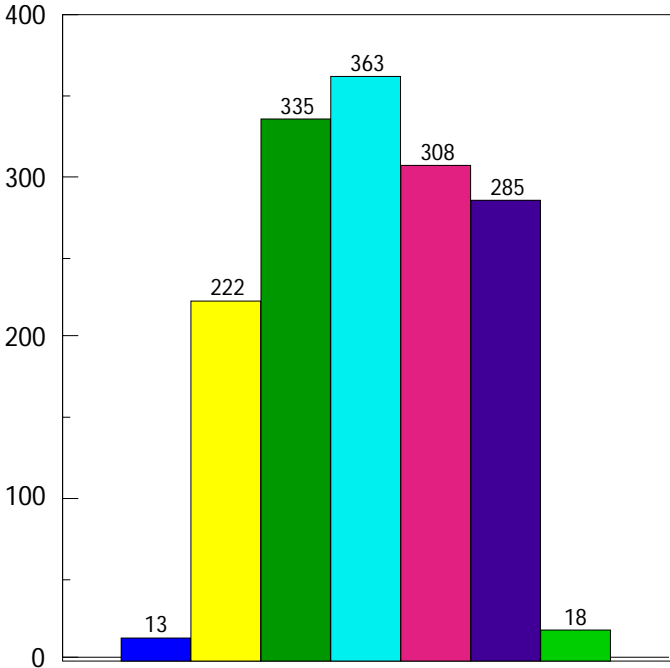
Victim Type



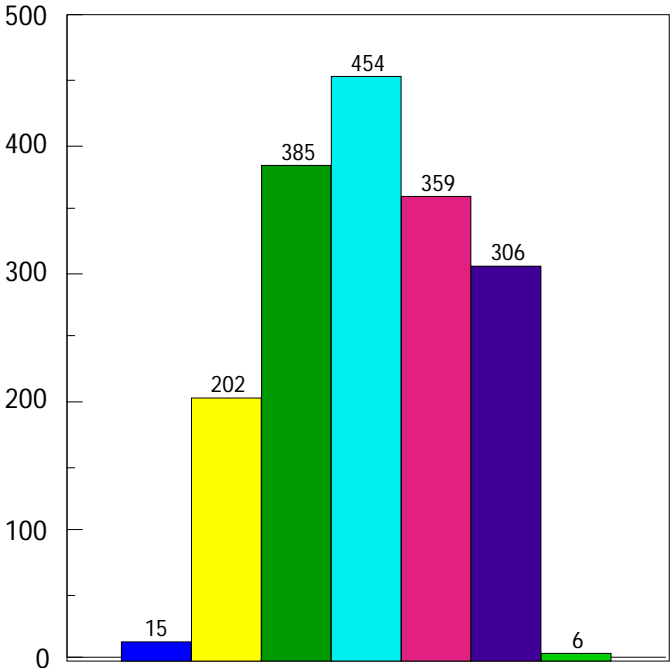
* Due to software issues, the 'Victim Type' is unavailable from Chicago PD's data and is not represented in the 'Victim Type' chart for 2000.

**State Totals
by Day of Week
Comparison**

2000



1999



Sunday Tuesday Thursday Saturday
Monday Wednesday Friday

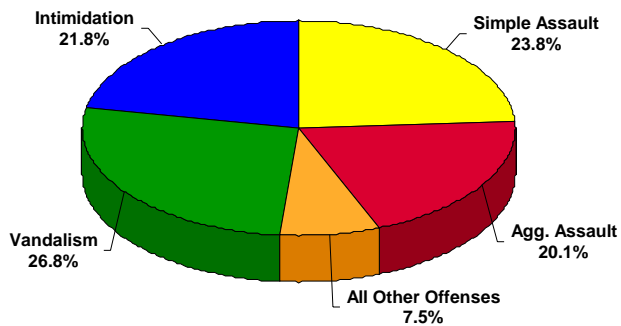
Sunday Tuesday Thursday Saturday
Monday Wednesday Friday

Hate Crimes

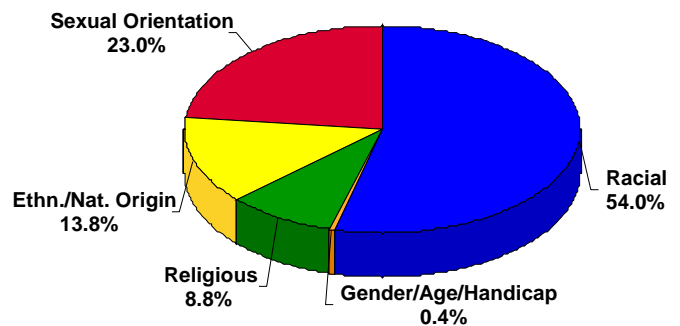
2000 State Totals

Bias Motivation					
Bias Nature	Group Percent	Bias Type	# of Offenses	% of Category	% of Total
Racial	54.0%	Anti-Black	98	76.0%	41.0%
		Anti-White	24	18.6%	10.0%
		Anti-Asian/Pacific Islander	7	5.4%	2.9%
Sexual Orientation	23.0%	Anti-Male Homosexual	39	70.9%	16.3%
		Anti-Female Homosexual	3	5.5%	1.3%
		Anti-Homosexual	13	23.6%	5.4%
Ethnicity/ National Origin	13.8%	Anti-Hispanic	14	42.4%	5.9%
		Anti-Arab	9	27.3%	3.8%
		Anti-Other Etn./National Origin	10	30.3%	4.2%
Religious	8.8%	Anti-Catholic	2	9.5%	0.8%
		Anti-Jewish	18	85.7%	7.5%
		Anti-Other-Religion	1	4.8%	0.4%
Gender/ Age/ Handicap	0.4%	Anti-Mentally Handicapped	1	100.0%	0.4%
Total	100%	Total	239	100.0%	100.0%

Hate Crime Offenses



Bias Motivation



**Hate/Bias Crime
2000 State Total Percentages**

Motivation	Murder	Aggravated Assault	Criminal Sexual Assault	Simple Assault	Robbery	Burglary	Theft/Larceny	Arson	Intimidation	Destruction/Damage/Vandalism	TOTAL
Anti-Arab	-	2.1	-	0.4	-	-	-	-	0.4	0.8	3.8
Anti-Asian/Pacific Islander	-	-	0.8	0.4	-	-	-	-	-	1.7	2.9
Anti-Black	-	6.3	-	9.6	0.4	1.3	-	0.8	9.6	13.0	41.0
Anti-Catholic	-	-	-	-	-	-	-	-	-	0.8	0.8
Anti-Female Homosexual	-	-	-	0.4	-	-	-	-	0.8	-	1.3
Anti-Hispanic	-	1.7	-	2.1	-	-	-	0.4	0.4	1.3	5.9
Anit-Homosexual (Gay & Lesbian)	-	0.8	-	0.4	-	0.4	-	-	1.3	2.5	5.4
Anti-Jewish	-	1.7	-	0.4	-	-	-	-	1.7	3.8	7.5
Anti-Male Homosexual	-	2.9	-	6.3	1.3	-	-	-	3.8	2.1	16.3
Anti-Mentally Handicapped	-	-	-	-	-	-	-	-	-	0.4	0.4
Anti-Other-Religious Group	-	-	-	0.4	-	-	-	-	-	-	0.4
Anti-Other Ethnicity/National Origin	-	1.3	-	0.4	0.4	0.4	-	-	1.7	-	4.2
Anti-White	-	3.3	-	2.9	1.3	-	-	-	2.1	0.4	10.0
Total	-	20.1	0.8	23.8	3.3	2.1	-	1.3	21.8	26.8	100.0

Hate Crime Offenses by Type of Victim

Type of Victim	# of Offenses	% of Total
Business	2	0.8%
Government	1	0.4%
Individual	214	89.5%
Other	8	3.3%
Religious Organization	10	4.2%
Society/Public	4	1.7%
Total	239	100.0%

Hate Crime Offenses by Location

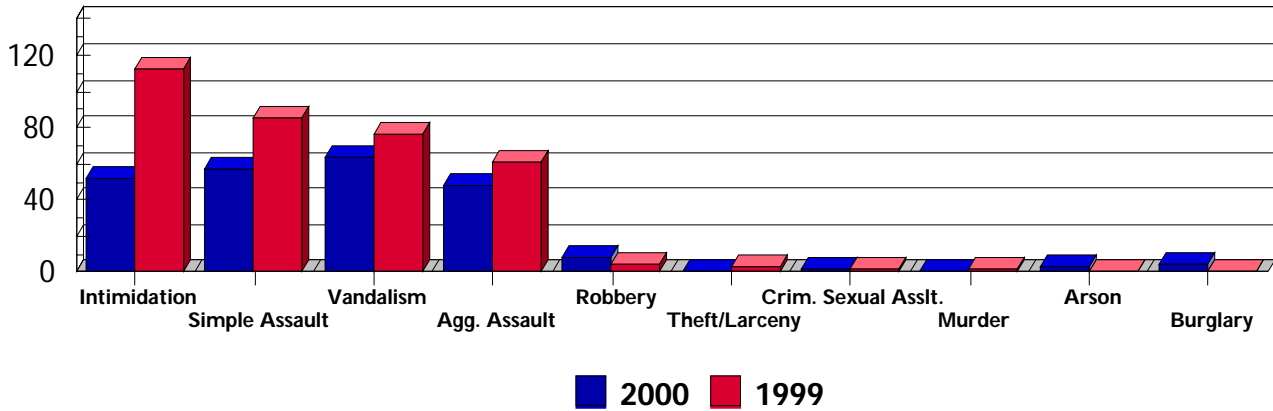
Location	# of Offenses	% of Total
Air/Bus/Train Terminal	3	1.3%
Bar/Night Club	4	1.7%
Church/Synagogue/Temple	10	4.2%
Commercial/Office Bldg.	6	2.5%
Field/Woods	8	3.3%
Government/Public Bldg.	1	0.4%
Highway/Road/Alley/Street	54	22.6%
Hotel/Motel, etc.	7	2.9%
Other/Unknown	27	11.3%
Parking Lot/Garage	27	11.3%
Residence/Home	53	22.2%
Restaurant	9	3.8%
School/College	24	10.0%
Service/Gas Station	4	1.7%
Specialty Store (TV, Furniture, etc.)	2	0.8%
Total	239	100.0%

Hate Crime Offenses by Offender Race

Offender's Race	# of Offenders	% of Total
Black	106	31.6%
Multi Racial Group	10	3.0%
Unknown	21	6.3%
White	198	59.1%
Total	335	100.0%

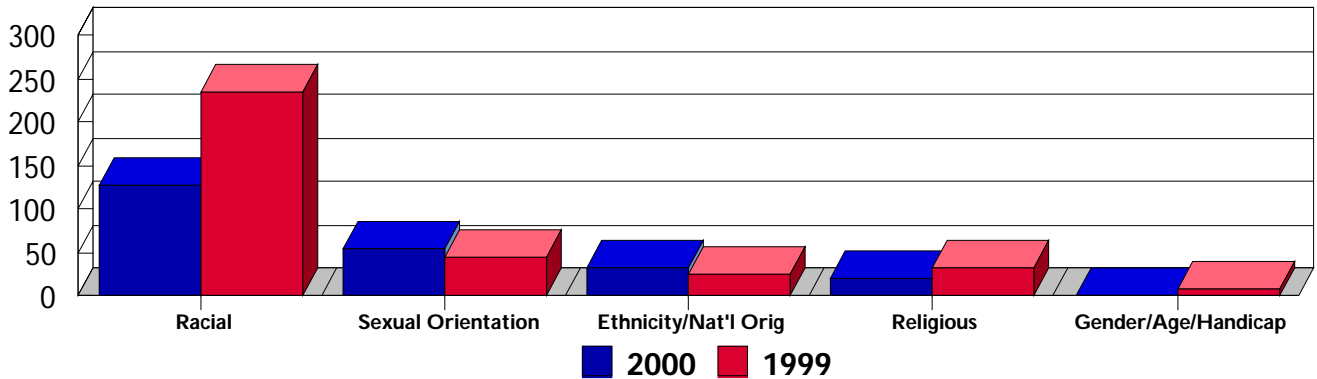
Hate Crime Comparison 2000/1999

Offenses



	Intimidation	Simple Assault	Vandalism	Agg. Assault	Robbery	Theft/Larceny	Crim. Sexual Asslt	Murder	Arson	Burglary
■ 2000	52	57	64	48	8	0	2	0	3	5
■ 1999	112	85	77	61	4	3	2	2	0	1

Bias



	Racial	Sexual Orientation	Ethnicity/Nat'l Origin	Religious	Gender/Age/Handicap
■ 2000	129	55	33	21	1
■ 1999	235	45	25	34	8