



ILLINOIS
GIS
ASSOCIATION



2019 REGIONAL GIS MEETINGS

**GO LIVE
DATE**

July 1, 2020?

How does NG911 differ from the current 911 System and what are the benefits?



NG911



Provides multiple levels of redundancy



More precise location information based on the location of the caller's device



Supports multiple options for call delivery including text, pictures and video

GIS is a functional data element for the overall operation of a NG9-1-1 solution



Maintenance will remain with the local agency and will be submitted to the State through an online Portal.

**FUNCTIONAL
DATA
ELEMENT**

WHAT ARE LOCAL DATA STEWARDS, DATA CREATORS AND DATA MAINTAINERS?

What are their responsibilities?



LOCAL DATA STEWARDS



Responsible for assuring maintenance is performed on the GIS data and maintains current contact information in the portal.



May also serve as the Data Maintainer.



Must acquire and maintain Certification

DATA MAINTAINERS/ DATA CREATORS



Primary person/group (Local Gov GIS Resource, Tech, Specialist, Analyst or PSAP Staff) who will create the data and perform the actual maintenance



Must acquire and maintain Certification

TRAINING AND CERTIFICATION FOR LOCAL DATA STEWARDS & DATA MAINTAINERS?



Training Plan

Responsibilities of the Local Data Steward and Data Maintainer

GIS and NG911 Orientation

GIS Program Policy and Procedures

GIS Data Standards and Maintenance

Data Submission Procedures



Delivery Format

A mixture of live classes and webinars

WHAT IS THE STATE'S RESPONSIBILITY?



Stand up the data portal.



Ensure that all data submitted uses the NENA/IL standard template and that the data has a 98% match rate.

**WHEN WILL TRAINING
BE AVAILABLE?**

NENA/IL GIS DATA MODEL STANDARDS

- NENA STA-06 defines the GIS data layers in a NG911 System that supports:
 - Location Validation
 - Geospatial Call Routing
 - Dispatch Routing
 - Public Safety Mapping Applications



STANDARDS



Compliance with standards is critical for planning and implementation.



Statewide data standardization improves PSAP operations.



The use of different formats will lead to call routing failures.

REQUIRED

STRONGLY
RECOMMENDED

RECOMMENDED

**DATA
LAYERS**

REQUIRED LAYERS

SYSTEM CANNOT
FUNCTION WITHOUT
THESE LAYERS



Road Centerline with Address Ranges



Address Points



Public Safety Answering Point (PSAP) Boundaries



Emergency Service Boundaries



Police, Fire, EMS



Provisioning Boundary



Response Agreements (for intersections at jurisdictional boundaries) this is a best practice, they don't need to be submitted.

**STRONGLY
RECOMMENDED**
SYSTEM CAN
FUNCTION, BUT YOU
MAY STRUGGLE
WITHOUT THE LAYERS
THAT ARE APPLICABLE
TO YOUR
JURISDICTION



Additional Emergency Service Boundaries



Animal Control



Park Police



County Boundaries



Municipal Boundary Layer (Unincorporated areas defined by mailing names)



Neighborhood Community Boundaries



Parcels



Tables

Street Name Alias Table

Landmark Name Alias Table

RECOMMENDED LAYERS

PROVIDES
ADDITIONAL
ASSISTANCE IN
FINDING A LOCATION
OR REFERENCE
POINTS

Airports and Runways

Bridges

Building Footprints

Cell Towers

Flood Plains

Hydrants

Mile Markers

Park Boundaries

Railroads

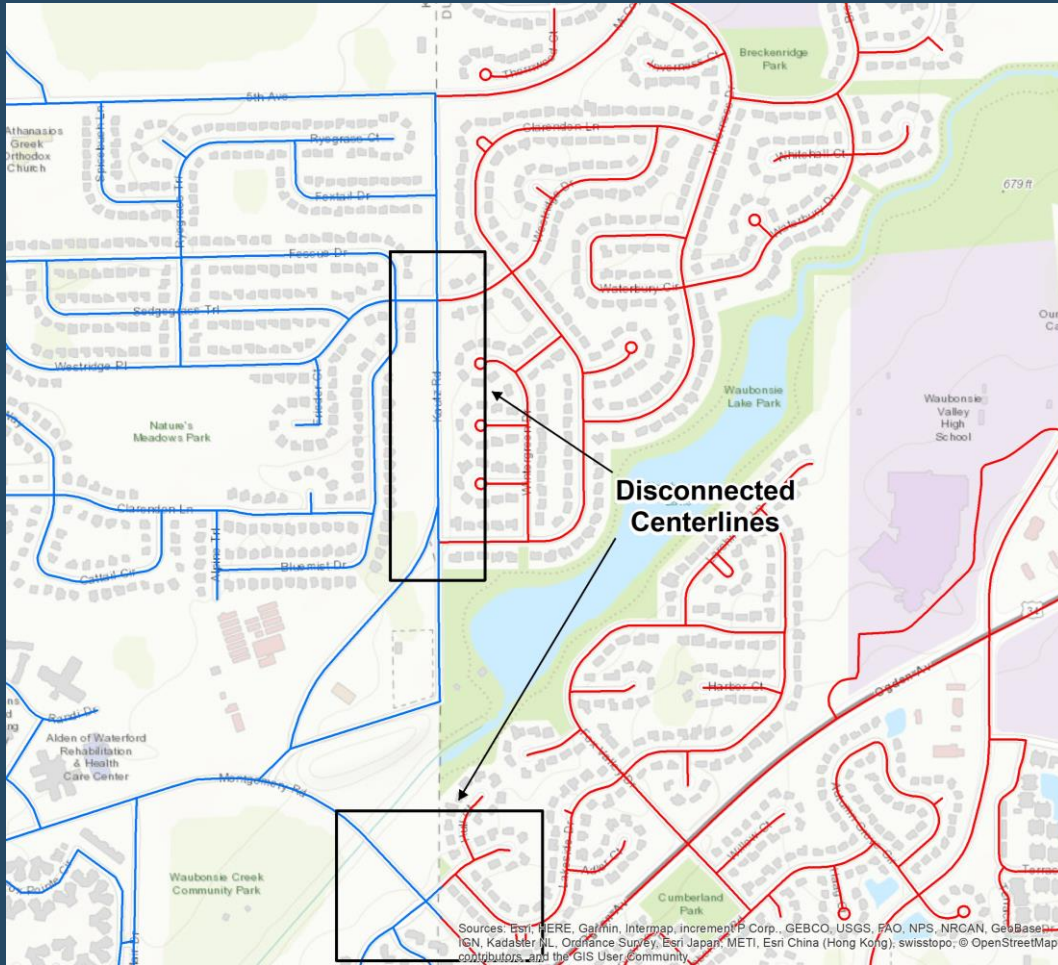
Rivers, lakes, creeks, ponds

Wind Towers

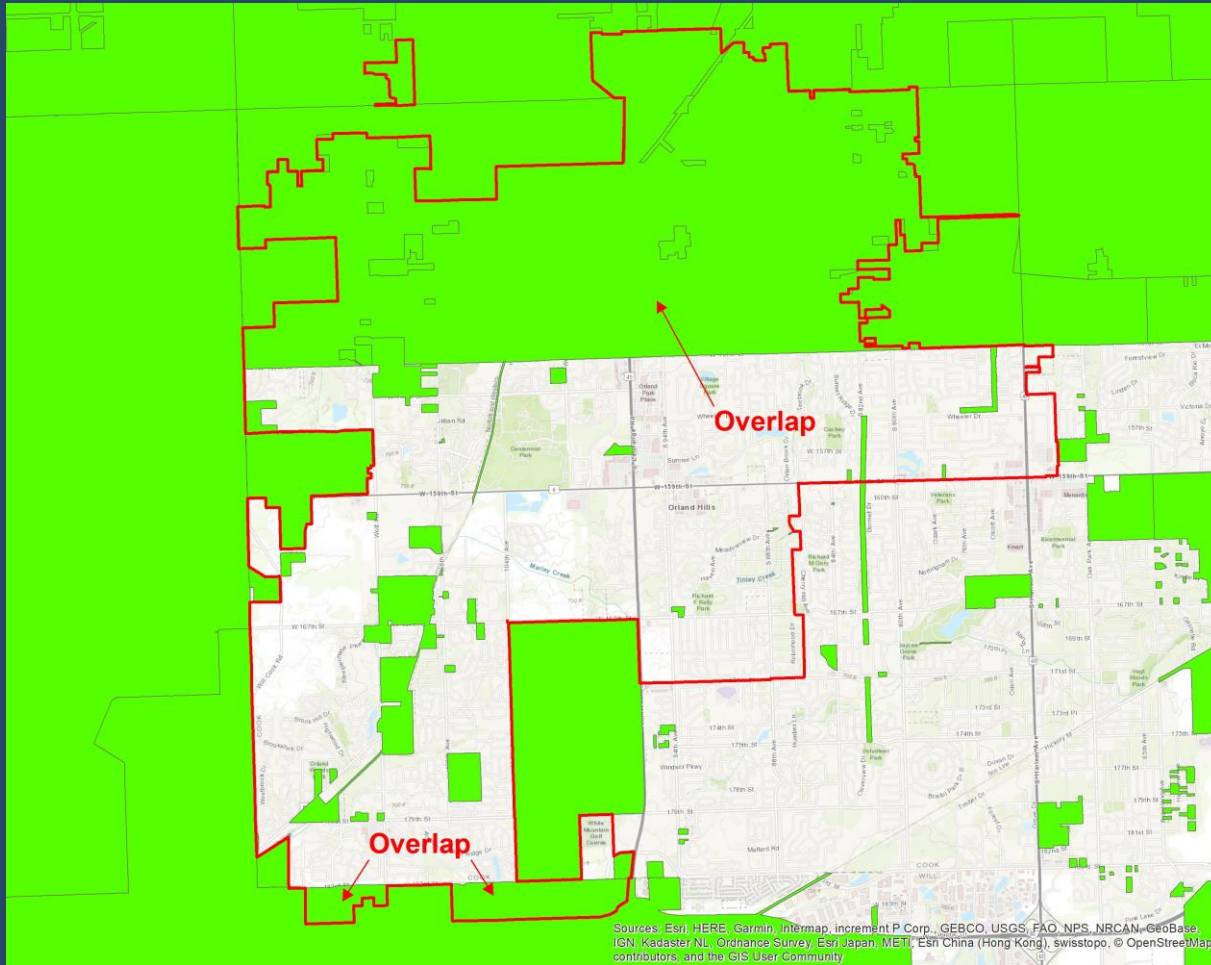
Water Mains

Zip Codes

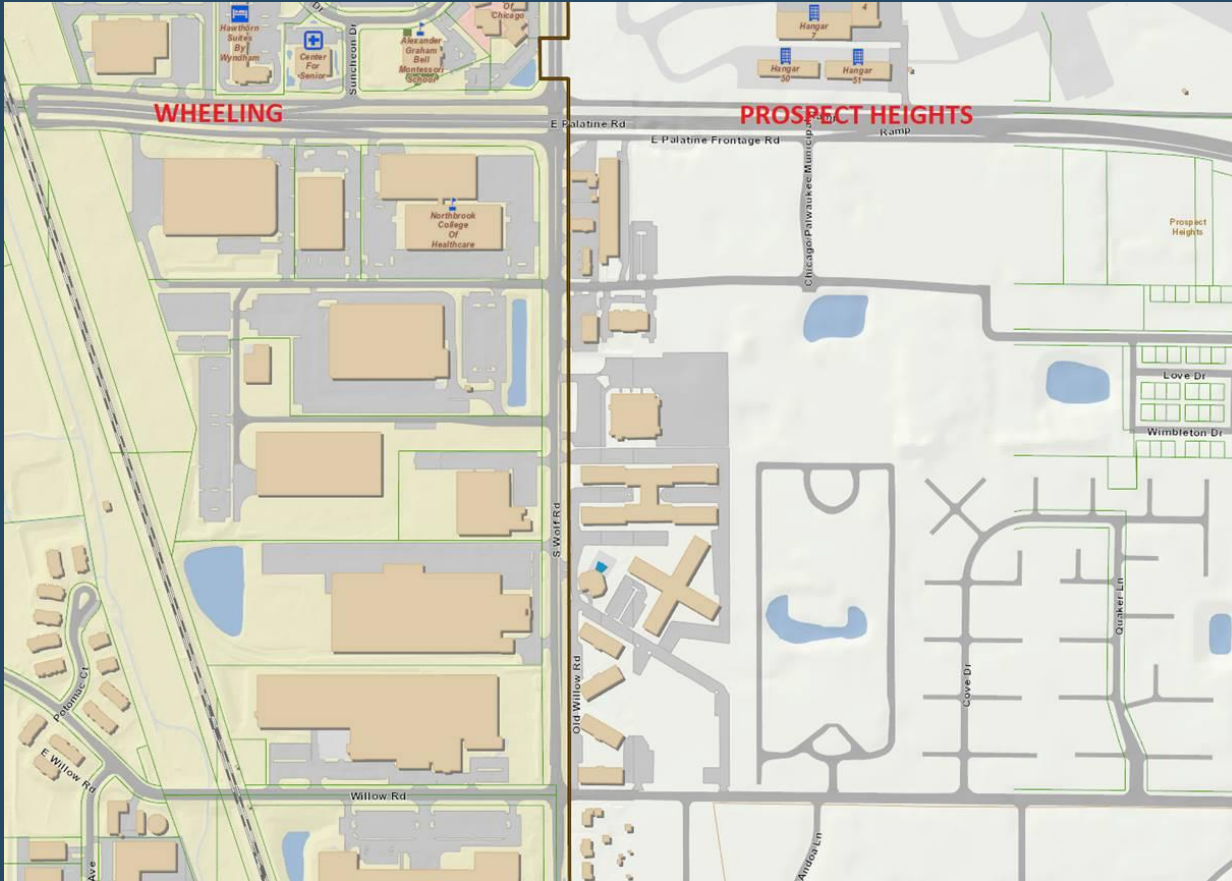
**AS GIS
PROFESSIONALS
WHAT ARE SOME
OF THE COMMON
DATA ERRORS YOU
SEE WORKING WITH
THE DATA?**



DISCONNECTED CENTER LINES



OVERLAP



PSAP BOUNDARIES

OTHER COMMON ERRORS

ADDRESS POINTS

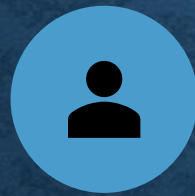
ADDRESS POINTS

101	Required field empty
102	Typo
103	Inconsistent abbreviation
104	Inconsistent Street Name scheme
105	Street Name Alias issue
111	Duplicate point (location)
112	Point located outside county
113	Added point
114	Point should be shifted to structure in aerial
115	Point should be deleted
116	No visible structure at location
121	Town incorrect or missing
122	Street Directional incorrect or missing
123	Street Type incorrect or missing
124	ESN incorrect or missing
125	Unit incorrect or missing

COMMUNICATING WITH YOUR NEIGHBORS



Agree on GIS
Boundaries and
Shared Features



PSAP



County



ESBs



Provisioning

NEXT STEPS



Review NENA-STA-6 - Standard for the NG9-1-1 GIS Data Model



Assess your data



Gather and maintain GIS data to support your jurisdiction



Do so in conformance with the standards



Coordinate with surrounding jurisdictions

NEXT STEPS



Review the
Readiness Checklist



Use the GDB
Template



Prepare the Required
Layers for Submittal

BIGGEST HURDLES?

What do you think will be the biggest hurdle for the project as a whole and for each individual PSAP in relation to GIS data?

HOW WILL GIS FOR NG911 IMPACT YOUR LOCAL OPERATION AND ADMINISTRATION?

- How much processing will happen locally, at the PSAP level, rather than the State's cloud?
- How will the NG911 GIS initiative impact your acquisitions?

REGIONAL GIS RESOURCES

It's important to reach out to your Regional contacts with questions and for support as needed.

REGION 1

Cook	Kendall
DuPage	Lake
Grundy	McHenry
Kane	Will
Kankakee	

Peter Schoenfield pschoenfield@lakecountyl.gov

Eric Venden ericv@village.gurnee.il.us

REGION 2

Boone	Lee
Bureau	Mercer
Carroll	Ogle
DeKalb	Rock Island
Henry	Stephenson
Jo Daviess	Whiteside
LaSalle	Winnebago

Eric Creighton ecreighton@stcharlesil.gov

Keith Nightlinger knightlinger@stcharlesil.gov

REGION 3

Champaign	Mason
DeWitt	McDonough
Ford	McLean
Fulton	Peoria
Henderson	Stark
Iroquois	Tazewell
Knox	Vermillion
Livingston	Warren
Marshall	Woodford

Brandon Lacey brandon.lacey@mcleancountyil.gov

Jim Cueno jcueno@ci.galesburg.il.us

REGION 4

Adams	Macon
Brown	Mason
Cass	Macoupin
Christian	Menard
Clark	Morgan
Coles	Moultrie
Cumberland	Piatt
Douglas	Pike
Edgar	Sangamon
Greene	Schuyler
Hancock	Scott
Logan	Shelby

Mark Yaccuci yacucci@illinois.edu

Chad Sperry csperry@ilgisa.org

REGION 5

Calhoun	Lawrence
Bond	Madison
Clay	Marion
Clinton	Monroe
Crawford	Montgomery
Edwards	Richland
Effingham	St. Clair
Fayette	Wabash
Jasper	Washington
Jefferson	Wayne
Jersey	

William Barrett	911@marionpolicedept.com
Rob Hursey	rwhursey@co.madison.il.us

REGION 6

Alexander	Perry
Franklin	Pope
Gallatin	Pulaski
Hamilton	Randolph
Hardin	Saline
Jackson	Union
Johnson	White
Massac	Williamson

William Barrett 911@marionpolicedept.com

Eric Creighton ecreighton@stcharlesil.gov

RESOURCES

- **GIS GOOGLE DRIVE** - Folders have been created for each 911 Authority. The folder will be used to upload your GIS files.
- A **GIS GOOGLE GROUP** has also been created and will allow you to post GIS related questions/discussion items.



OTHER RESOURCES

1. [IL NG911 GIS Governance Policy](#)
2. [IL NG911 GIS Data Standards](#)

Available on the Office of the Statewide 9-1-1
Administrators website.

Found under:

9-1-1 Information > Next Generation 9-1-1 Project

<https://www2.illinois.gov/sites/statewide911/Pages/default.aspx>



INTERACTIVE WEB MAP

- Shows the status of PSAP boundary deliveries.
- When zoomed in will show the areas of overlap between neighboring jurisdictions and PSAP call center locations.
- Select a region on the left to filter the pie chart and the map to look at a specific Region.
- <https://arcg.is/1H0qmG>



NG911 MILESTONES

Milestones	
Less Than 1 year to Go Live	7/1/2019
6 Months to Go Live	12/31/2019
Go Live	7/1/2020
System Migration Complete	7/1/2021

REQUIRED LAYERS DELIVERY SCHEDULE

*

	Effort	Time To Complete	Draft 1	Draft 2	Final
PSAP Boundary	Easy	Day(s)	4/27/2019	8/31/2019	10/31/2019
Provisioning	Easy	Day(s)	8/31/2019	10/31/2019	12/31/2019
Police Boundary	Moderate	Week(s)	10/31/2019	12/31/2019	2/28/2020
Fire Boundary	Moderate	Week(s)	12/31/2019	2/28/2020	4/30/2020
EMS Boundary	Moderate	Week(s)	2/28/2020	4/30/2020	6/30/2020
Address Points	Moderate	Month(s)	4/30/2020	8/30/2020	12/31/2020
Road Centerlines	Difficult	Month(s)	8/30/2020	12/31/2020	4/30/2021

DON'T WAIT!!!!

- These deadlines are absolute maximums!
 - Submissions can happen at any time.
 - Don't wait for the deadlines to submit.
 - If you have it send it.
 - Get your data in early, and let us review it.

QUESTIONS?

