

# LEADS Daily Bulletin

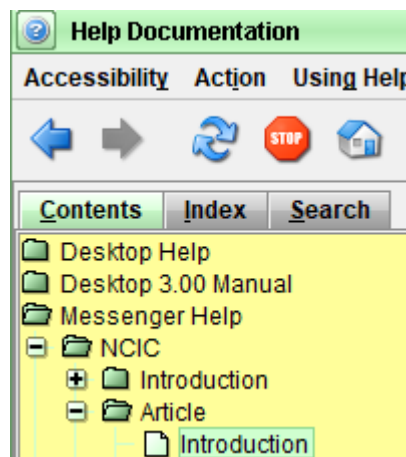
January 21, 2026

## Lost Article Entries

The Lost Article MKE (ELA) can only be used with public safety, homeland security, or critical infrastructure item of identification (category **code Q**) or equipment (category **code Z**). If the item is not public safety, homeland security, or critical infrastructure related, it may only be entered with the Stolen Article MKE (depending on the item's value).

A citizen's lost driver's license does not meet the definition of public safety, homeland security, or critical infrastructure item of identification and should not be entered as Lost Article using TYP/QDRIVER. A driver's license must be entered as a Stolen Article MKE (EA or EA1) with TYP/IDRIVER.

For more information on Lost Articles you may search the NCIC Help Manual. On LEADS 3.0 Messenger, click on Help and then Launch Help. In the Contents section, double click on Messenger Help, then double click on the NCIC folder. The folder is labelled Article, then Introduction. Go down to section 1.7 Message Field Codes and Edits, to section TYP, the NCIC Code Manual link is in this section.



Please contact the Help Desk (866/LEADS-00) [ISP.HelpDesk@illinois.gov](mailto:ISP.HelpDesk@illinois.gov) with questions.

[illegible]